

Grace

Thermo Decorative Paint

made in

ATRIATHERMIKA

Thermal insulating Coatings

Grace

Non chiamatela parete...

GRACE è una pittura Thermo Decorativa unica.

Materia, tecnologia e bellezza si uniscono e danno vita all'inedita finitura Fluid Metal: magiche efflorescenze metalliche e metamorfiche evoluzioni luminose che danno vita a vere e proprie opere d'arte.

La bellezza non è tutto: GRACE è un decorativo made in Atriathermika - sistema di pitture termoisolanti - ed è garantita dalla tecnologia Wellness-Care® di Atria: per un comfort abitativo senza eguali e un **RISPARMIO ENERGETICO CERTIFICATO***.

Bellezza, unicità, prestazioni eccellenti: tutto questo è Grace.

It's not just a wall...

GRACE is a unique Thermo Decorative Paint.

Material, technology and beauty come together and give life to an original Fluid Metal finish: a true work of art in magical metal efflorescence and bright metamorphic evolution.

*But beauty is not everything: GRACE is an **ATRIATHERMIKA** decorative thermal insulating paint guaranteed by Atria Wellness-Care® technology for an unmatched living comfort and **CERTIFIED ENERGY SAVINGS***.*

Beauty, uniqueness, performance: this is Grace.

Grace

Grace

Thermo Decorative Paint



GRACE GOLD / SILVER

Confezioni disponibili:
2,5 Kg - 10 Kg

Available in:
2,5 Kg - 10 Kg

Bellezza e Benessere.

GRACE è una pittura decorativa ad acqua con finitura fluid metal prodotta tramite impianto di termopolimerizzazione a base di resine terpoliacriliche gel e speciali additivi - realizzati e testati secondo la garanzia *Wellness-Care® Technology* di Atria. Grande impatto estetico, antimuffa, anticondensa, traspirante, alta copertura. Prima di applicare **GRACE** è consigliato preparare le superfici con **Atriathermika®** Primer Termiko per interni.

Beauty and wellness.

GRACE is decorative paint made from water with a fluid metal finish produced using a thermal polymerisation system with a terpolyacrylic resin gel and special additives base - manufactured and tested according to *Wellness-Care® Technology* guaranteed by Atria. Major aesthetic impact, anti-mould, anti-condensation, breathable and excellent coverage. Before applying **GRACE** you are advised to prepare the surfaces with **Atriathermika®** Termiko Primer for interiors.



Made in Italy



Comfort abitativo:

Uniforme distribuzione del calore, Ambienti più sani, Traspirante, Anticondensa, Antimuffa

Comfortable living:

Even heat distribution, surroundings that are healthier, breathable, anti-condensation and anti-mould



Risparmio energetico:

Certificato del **20%***

Energy saving:

*Certified 20%**

Consumo:

0,7 - 0,75 Kg/mq in relazione alla superficie

Spreading rate:

0,7 to 0,75 Kg/sqm based on the surface

Diluizione:

Pronto all'uso. Max 1% con acqua, se necessario

Dilution:

Ready for use. Max 1% with water, if necessary

Aspetto:

Metallizzato 3D - finitura Fluid Metal

Appearance:

Metalized 3D - Fluid Metal finish

* Rapporto di prova del Dipartimento di Scienze degli Alimenti e dell'Ambiente dell'Università degli Studi di Messina.

* *Test report from the Department of Food Science and the Environment from the University of Messina.*



Wellness-Care® Technology

Wellness Care® Technology di Atria è il marchio di garanzia presente sui prodotti che rispondono alle massime caratteristiche di isolamento termico. **GRACE** e il Sistema **Atriathermika®** offrono un isolamento maggiore del 100% rispetto ad una normale pittura decorativa, con una conseguente eliminazione delle muffe e della condensa. Garanzia di benessere e comfort per la vostra casa.

Wellness Care® Technology by Atria is the guarantee mark on products meeting the highest thermal insulation characteristics. GRACE and the Atriathermika® System offer over 100% insulation compared to normal decorative paint, resulting in mould and condensate elimination. Guaranteed wellness and comfort in your home.



Anti-mold



Anti-condensation



Energy Save 20%*

Energy Save 20% è il marchio di Atria che viene concesso ai prodotti che ottengono la certificazione di risparmio energetico. **GRACE** e le pitture del Sistema **Atriathermika**[®] - se applicate secondo le norme presenti nelle guide all'applicazione - vi permettono un reale abbattimento dei costi di raffreddamento e riscaldamento degli ambienti trattati e una conseguente riduzione dei costi energetici, per un risparmio certificato fino al 20%*

***Energy Save 20%** is the Atria mark granted to products that obtain energy saving certification. **GRACE** and **Atriathermika**[®] System paint - if applied according to the standards in the application guides - it gives real cost savings in cooling and heating terms in the treated surroundings and as a result reduces energy costs, for a certified saving of 20%**

* Rapporto di prova del Dipartimento di Scienze degli Alimenti e dell'Ambiente dell'Università degli Studi di Messina.

* *Test report from the Department of Food Science and the Environment from the University of Messina.*

GRACE SILVER
FLUID METAL FINISH

Grace

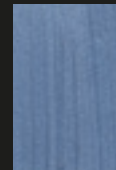




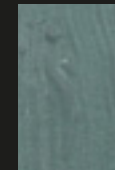
GRACE SILVER

48 COLORS

GS-110



GS-120



GS-130



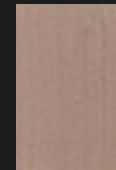
GS-111



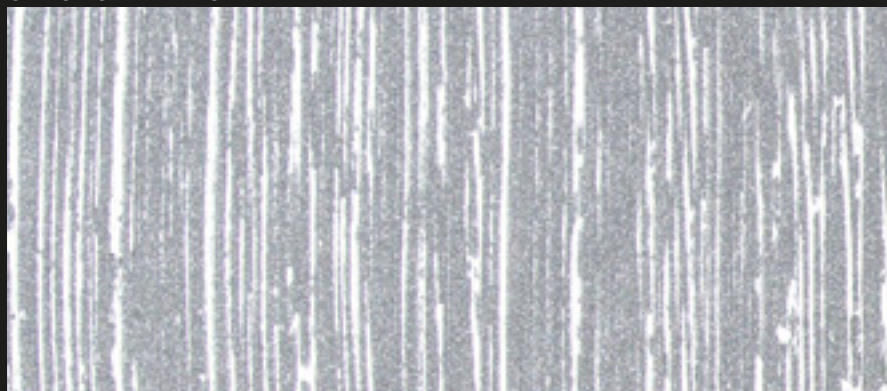
GS-121



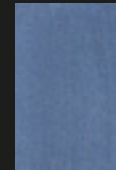
GS-131



GRACE SILVER BASE



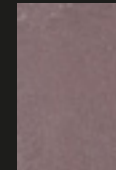
GS-210



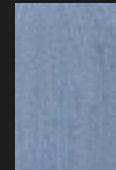
GS-220



GS-230



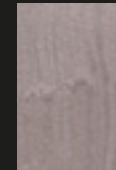
GS-211



GS-221



GS-231



I colori sono indicativi.

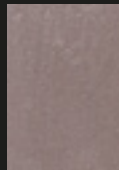
GS-140



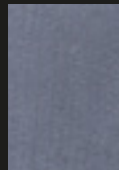
GS-150



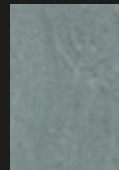
GS-160



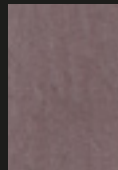
GS-310



GS-320



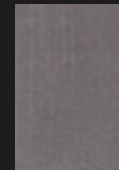
GS-330



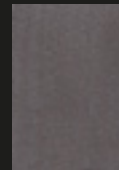
GS-340



GS-350



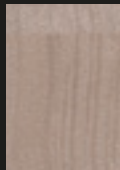
GS-360



GS-141



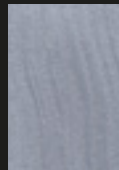
GS-151



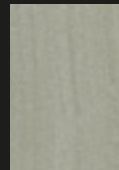
GS-161



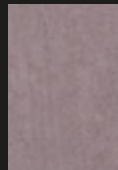
GS-311



GS-321



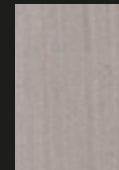
GS-331



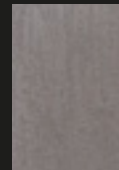
GS-341



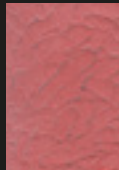
GS-351



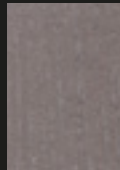
GS-361



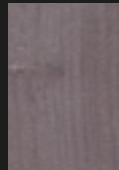
GS-240



GS-250



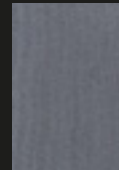
GS-260



GS-410



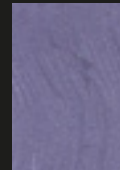
GS-420



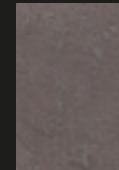
GS-430



GS-440



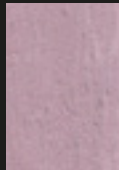
GS-450



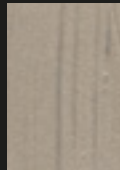
GS-460



GS-241



GS-251



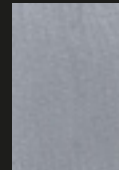
GS-261



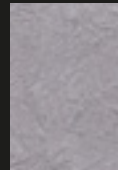
GS-411



GS-421



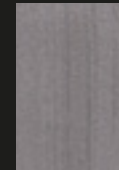
GS-431



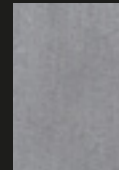
GS-441



GS-451



GS-461



Colors are indicative.

GRACE GOLD
FLUID METAL FINISH



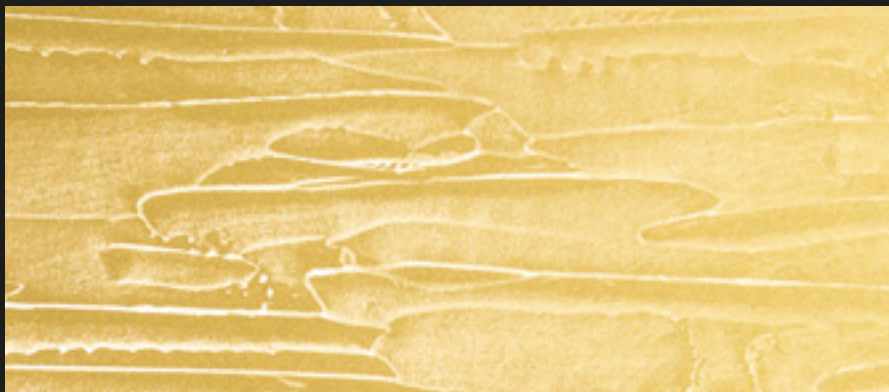
Grace



GRACE GOLD

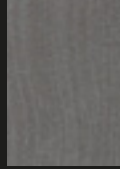
24 COLORS

GRACE GOLD BASE

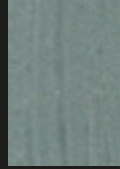


I colori sono indicativi.

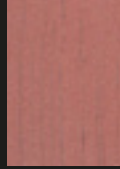
GG-310



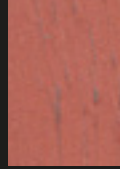
GG-320



GG-330



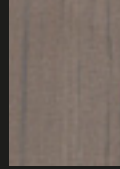
GG-340



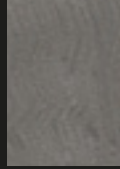
GG-350



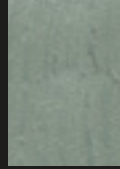
GG-360



GG-311



GG-321



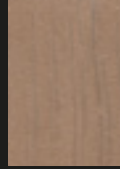
GG-331



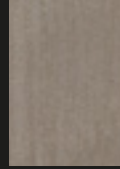
GG-341



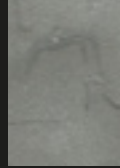
GG-351



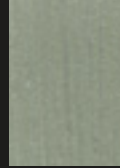
GG-361



GG-410



GG-420



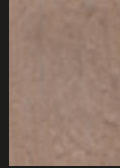
GG-430



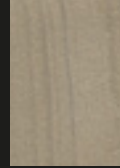
GG-440



GG-450



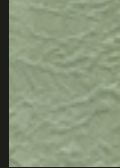
GG-460



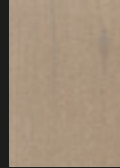
GG-411



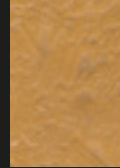
GG-421



GG-431



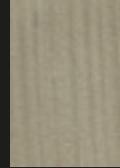
GG-441



GG-451



GG-461



Colors are indicative.



GRACE

FIL POSE' EFFECT

vertical



ATRIATHERMIKA
PRIMER TERMIKO



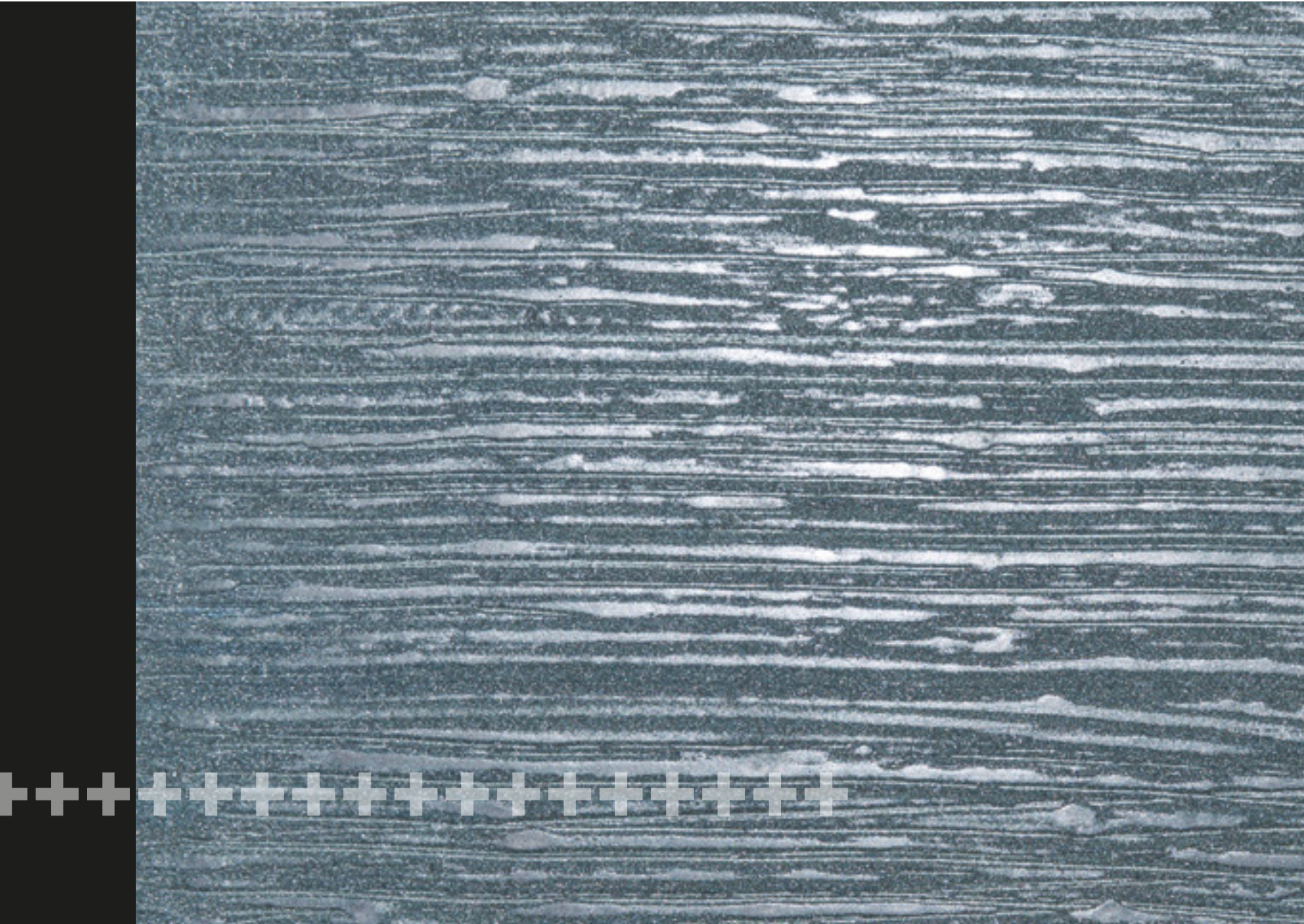
SPATOLA DENTATA
NOTCHED TROWEL



TAMPONE STRIPES
STRIPES TOOLS



FRATTONE TRAPEZOIDALE
TRAPEZOIDAL TROWEL



GRACE

FIL POSE' EFFECT

horizontal



ATRIATHERMIKA
PRIMER TERMIKO



SPATOLA DENTATA
NOTCHED TROWEL



TAMPONE STRIPES
STRIPES TOOLS



FRATTONE TRAPEZOIDALE
TRAPEZOIDAL TROWEL



GRACE

BRICK EFFECT



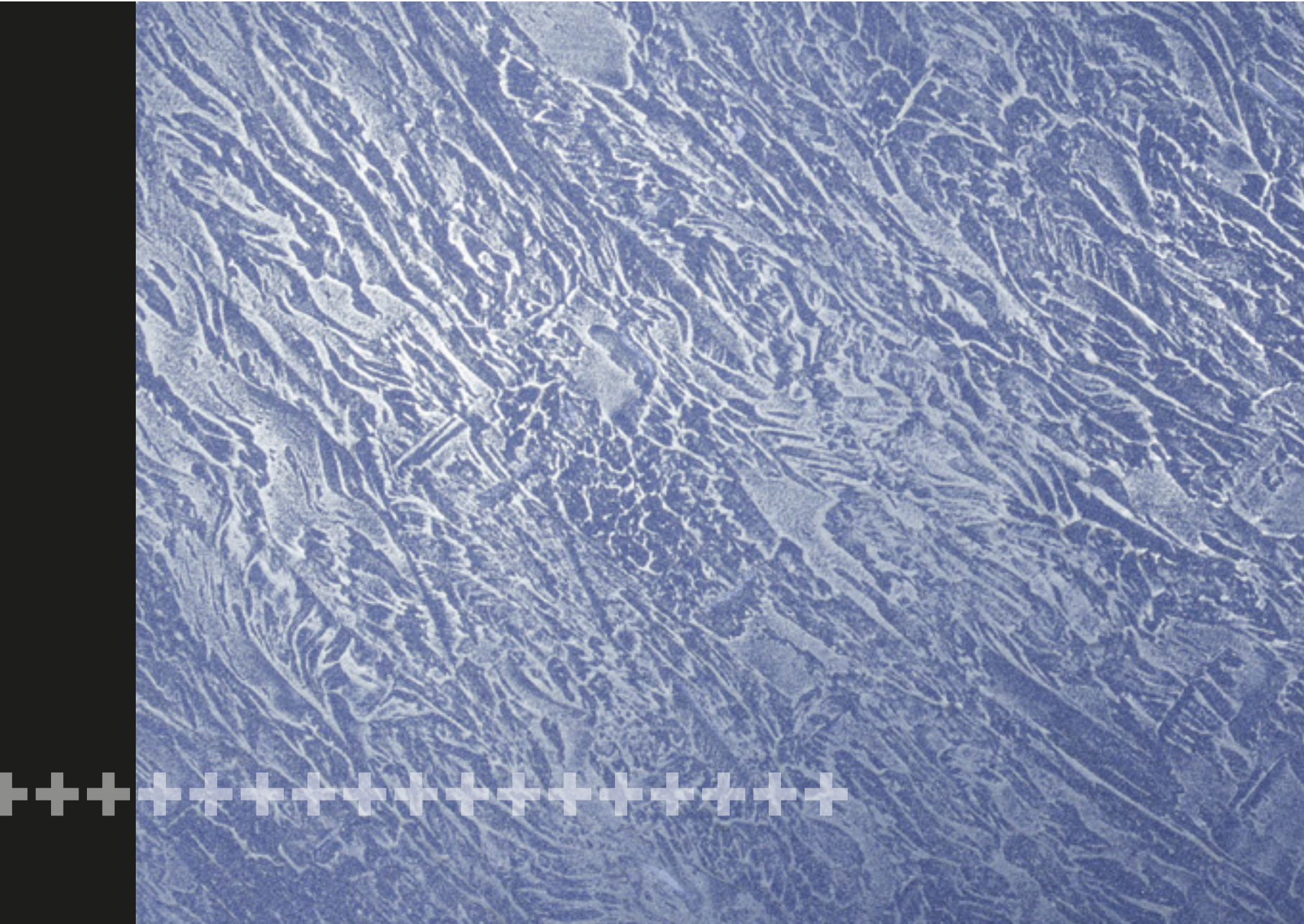
ATRIATHERMIKA
PRIMER TERMIKO



SPATOLA DENTATA
NOTCHED TROWEL



FRATTONE TRAPEZOIDALE
TRAPEZOIDAL TROWEL



GRACE

FIRE EFFECT



ATRIATHERMIKA
PRIMER TERMIKO



SPATOLA DENTATA
NOTCHED TROWEL



FRATTONE TRAPEZOIDALE
TRAPEZOIDAL TROWEL



GRACE

LEAF EFFECT



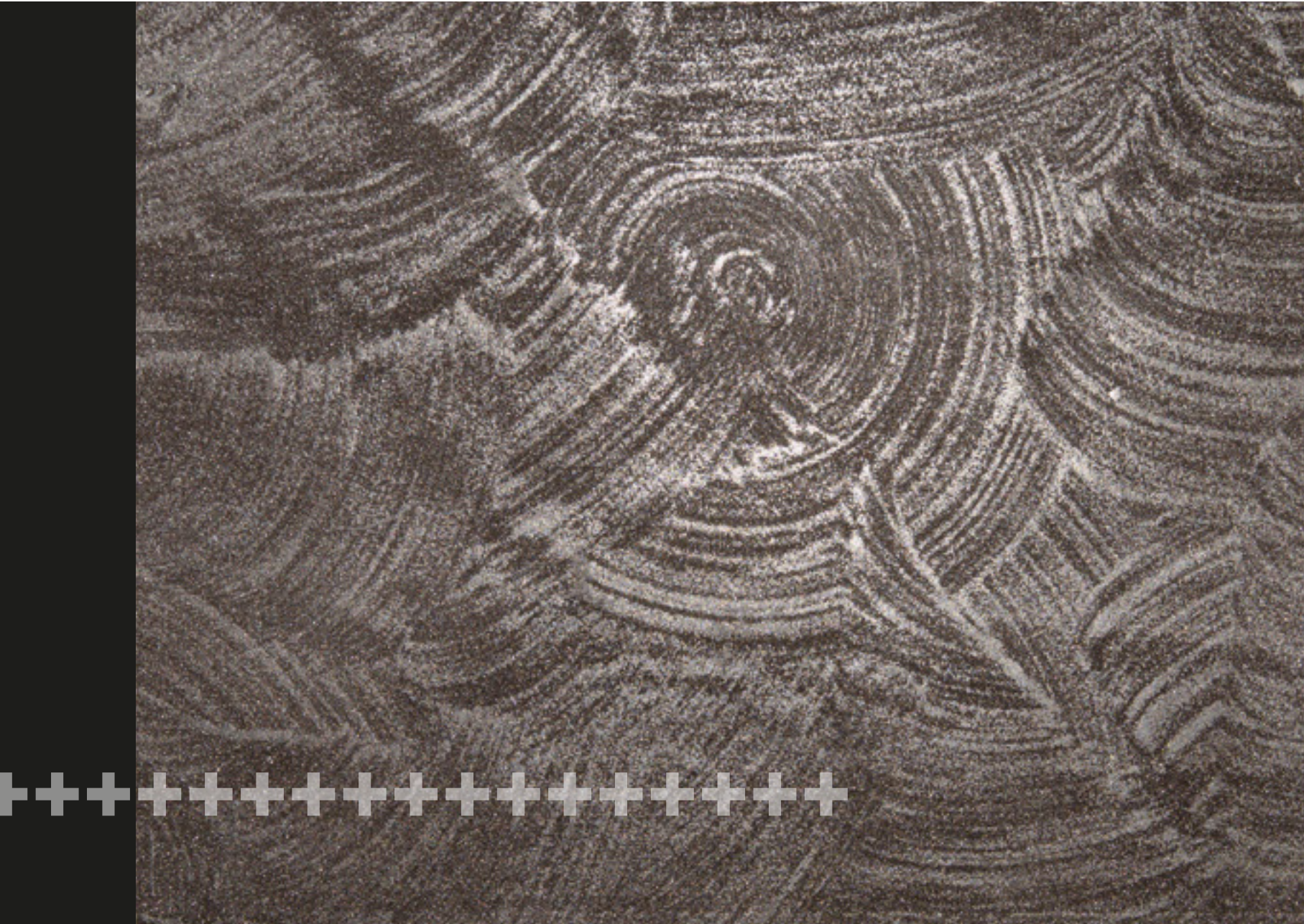
ATRIATHERMIKA
PRIMER TERMIKO



SPATOLA DENTATA
NOTCHED TROWEL



FRATTONE TRAPEZOIDALE
TRAPEZOIDAL TROWEL



GRACE

CIRCLE EFFECT



ATRIATHERMIKA
PRIMER TERMIKO



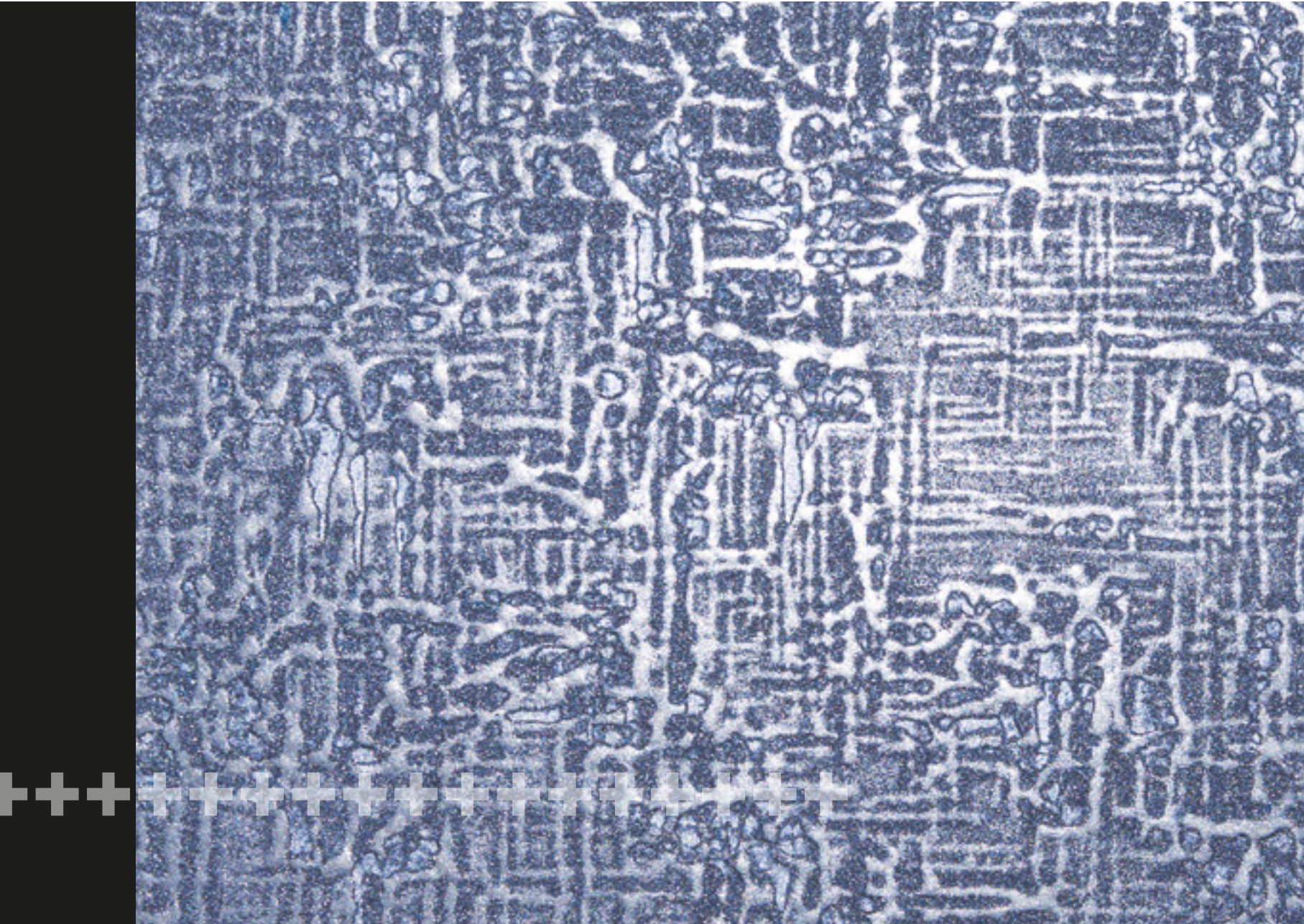
SPATOLA DENTATA
NOTCHED TROWEL



TAMPONE STRIPES
STRIPES TOOLS



FRATTONE TRAPEZOIDALE
TRAPEZOIDAL TROWEL



GRACE

WEB EFFECT



ATRIATHERMIKA
PRIMER TERMICO



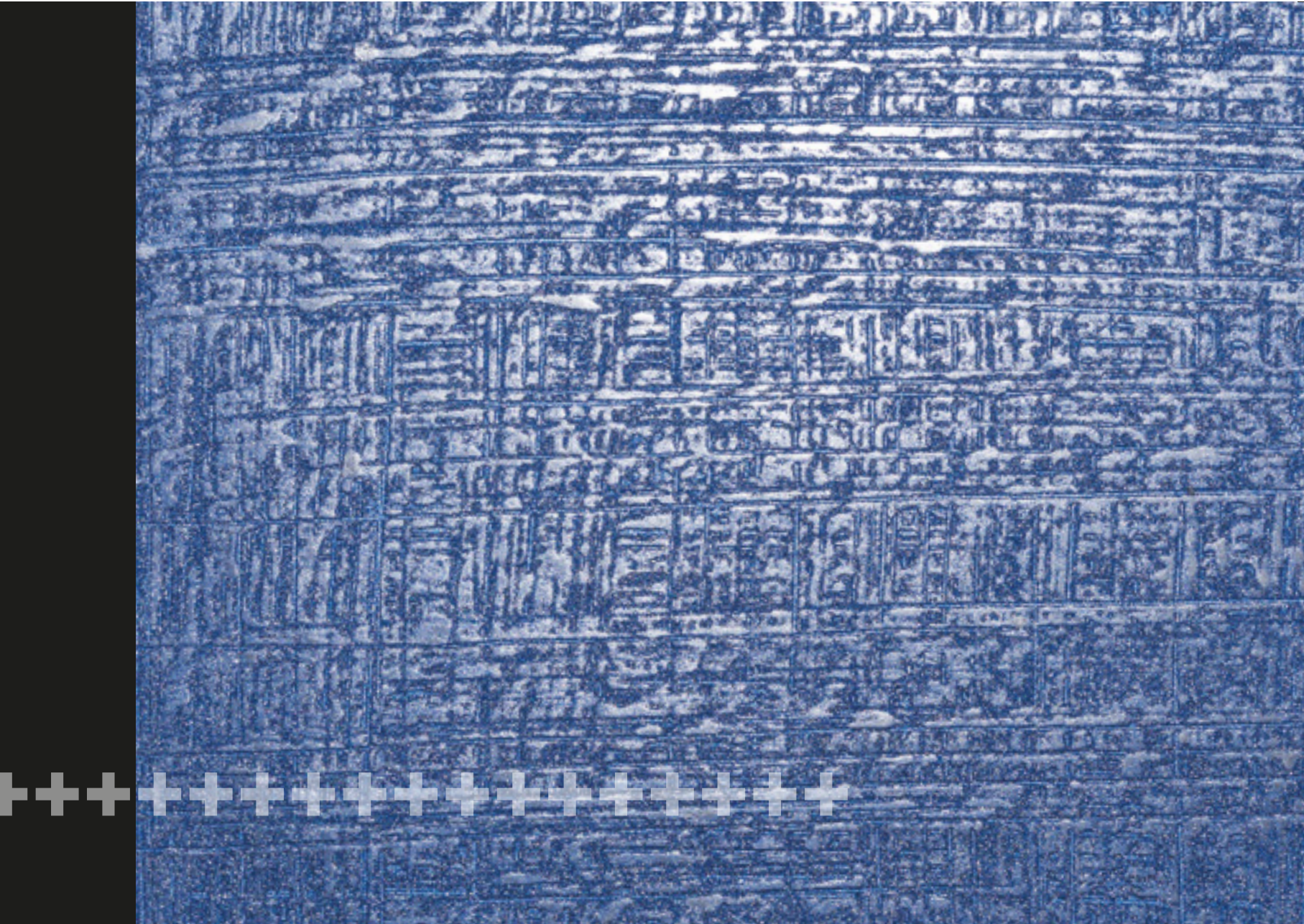
SPATOLA DENTATA
NOTCHED TROWEL



RULLO WEB
WEB ROLLER



FRATTONE TRAPEZOIDALE
TRAPEZOIDAL TROWEL



GRACE

JEANS EFFECT



ATRIATHERMIKA
PRIMER TERMICO



SPATOLA DENTATA
NOTCHED TROWEL



TAMPONE STRIPES
STRIPES TOOLS



FRATTONE TRAPEZOIDALE
TRAPEZOIDAL TROWEL



GRACE è disponibile in 2 colori base: GOLD e SILVER.

Ogni base può essere colorata tramite 11 paste coloranti serie BW del sistema tintometrico ATRIACOLORS, ottenendo 72 tinte differenti (24 gold - 48 silver).

GRACE is available in 2 base colors; GOLD and SILVER.

Each base paint may be coloured using 11 colourants BW series in the ATRIACOLORS tinting system thereby obtaining 72 colours (24 gold - 48 silver).



BW SERIES



I colori sono indicativi. Colors are indicative.

Attrezzatura consigliata



ATTREZZATURA CONSIGLIATA PER LA DECORAZIONE EQUIPMENT RECOMMENDED FOR DECORATION



TAMPONE STRIPES



RULLO WEB



FRATTONI TRAPEZOIDALE

CONSIGLI PER L'APPLICAZIONE APPLICATION ADVICE

Atriathermika Primer Termiko



PREPARAZIONE DELLA SUPERFICIE SURFACE PREPARATION
PER GLI EFFETTI DECORATIVI REALIZZABILI - FOR ALL THE DECORATIVE EFFECTS

Prima di applicare **GRACE** è consigliabile preparare la superficie con **Atriathermika®** Primer Termiko per interni. Applicare tramite rullo. Attendere l'asciugatura del prodotto.
*Before applying **GRACE** you are advised to prepare the surface with Atriathermika® Primer Termiko for interiors. Use a roll to apply it. Wait for the product to dry.*

NB: Se necessario e in presenza di muffa e/o funghi, utilizzare **Atriathermika®** Igienizzante prima del Primer.
If necessary, and with mould and/or mildew present, use Atriathermika® Igienizzante before the Primer.

GRACE Spatola dentata in acciaio

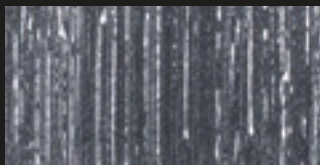


APPLICAZIONE DI GRACE APPLYING GRACE
PER GLI EFFETTI DECORATIVI REALIZZABILI - FOR ALL THE DECORATIVE EFFECTS

Applicare **GRACE** servendosi di una spatola dentata in acciaio (3x3 mm). Stendere il prodotto a parete e usare la parte dentata per distribuire equamente la pittura decorativa appena applicata. Passare alla decorazione della superficie (vedi pagina successiva).
*Apply **GRACE** using a special toothed, steel brush (3x3 mm). Spread the product on the wall and use the toothed part to evenly distribute the decorative paint that was just applied. Then decorate the surface (see next page).*



GUIDA PER LA DECORAZIONE DECORATION GUIDE

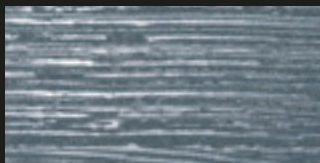


FIL POSE' EFFECT Verticale - Vertical

Required Tool: **TAMPONE STRIPES - STRIPES TOOLS**

Decorare la superficie con lunghi movimenti verticali, dall'alto verso il basso e viceversa.

Decorate the surface with long vertical movements, from top to bottom and vice versa.

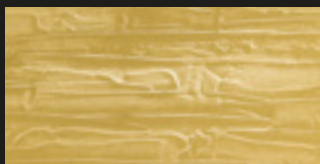


FIL POSE' EFFECT Orizzontale - Horizontal

Required Tool: **TAMPONE STRIPES - STRIPES TOOLS**

Decorare la superficie con lunghi movimenti orizzontali, da destra verso sinistra e viceversa.

Decorate the surface with long horizontal movements, from right to left and vice versa.

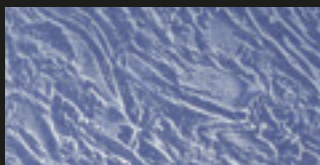


BRICK EFFECT

Required Tool: **FRATTONE TRAPEZOIDALE - TRAPEZOIDAL TROWEL**

Decorare la superficie accarezzandola con brevi movimenti orizzontali, alternando da sinistra a destra e da destra a sinistra, fino ad ottenere l'effetto desiderato.

Decorate the surface caressing it with short horizontal movements, alternating from left to right and right to left until you obtain the desired effect.



FIRE EFFECT

Required Tool: **FRATTONE TRAPEZOIDALE - TRAPEZOIDAL TROWEL**

Decorare la superficie accarezzandola con brevi movimenti obliqui e ondulatori verso l'alto e verso il basso - invertendo anche il senso del frattone - per ottenere l'effetto desiderato.

Decorate the surface caressing it with short oblique and undulated movements from top to bottom, also inverting the direction of the trowel, to obtain the desired effect.



LEAF EFFECT

Required Tool: **FRATTONE TRAPEZOIDALE - TRAPEZOIDAL TROWEL**

Decorare la superficie accarezzandola con brevi movimenti semicircolari, da destra verso sinistra e viceversa, fino ad ottenere l'effetto desiderato.

Decorate the surface caressing it with short semi-circular movements, alternating from right to left and vice versa until you obtain the desired effect.



CIRCLE EFFECT

Required Tool: **TAMPONE STRIPES - STRIPES TOOLS**

Decorare la superficie con brevi movimenti circolari alternando a brevi movimenti semicircolari, in senso orario ed antiorario, fino ad ottenere l'effetto desiderato.

Decorate the surface with alternating short circular and semi-circular movements, in a clockwise and anti-clockwise direction, until you obtain the desired effect.



WEB EFFECT

Required Tool: **RULLO WEB - WEB ROLLER**

Decorare la superficie con lunghi movimenti orizzontali, alternando a movimenti verticali, fino ad ottenere l'effetto desiderato.

Decorate the surface with alternating long horizontal and vertical movements, until you obtain the desired effect.



JEANS EFFECT

Required Tool: **TAMPONE STRIPES - STRIPES TOOLS**

Decorare la superficie con lunghi movimenti verticali, dall'alto verso il basso e viceversa. Ultimata questa fase, procedere allo stesso modo con lunghi movimenti orizzontali.

Decorate the surface with long vertical movements, from top to bottom and vice versa. Once this phase is complete, proceed in the same way with long horizontal movements.

FLUID METAL Frattone trapezoidale



LUCIDATURA FLUID METAL FLUID METAL POLISHING

MINIMO 12 ORE DOPO L'APPLICAZIONE in relazione alla temperatura.
MINIMUM 12 HOURS AFTER APPLICATION based on the temperature.

Lucidare la superficie trattata con il frattone trapezoidale in acciaio. Prima di lucidare la superficie accertarsi che il prodotto sia asciutto e indurito.

Polish the treated surface with the steel trapezoidal trowel. Before polishing the surface, ensure the product is dry and hard.

NB: Il prodotto applicato non deve essere morbido. Nel caso in cui risulti morbido, attendere l'indurimento.
The applied product must never be soft. If it is soft, wait for it to harden.

Adesso liberare la fantasia, applicando GRACE a modo vostro!

Unlock your imagination, apply GRACE any way you want!

Per maggiori informazioni sull'applicazione e per visionare le video guide, vi invitiamo a visitare il sito www.gracepaint.it

For further information and to view the guide videos, please visit the website www.gracepaint.it