

## PRODUCT CATALOGUE

**SAFBUILD Ltd**

Unit 58, Pinnacle Tower - 11 Saffron Central Square Croydon Surrey CR0 2GE, UK  
www.safbuild.com - info@safbuild.com t:+44 (0)20 86808772

# Index

<b>1.</b>	<b>DOORS</b>	
1.1	Glass Doors for internal use	page 4
1.2	Accessories for doors and windows (hinges, handles, panic push-bars, tilt-and-slide mechanisms, etc.)	page 5
<b>2.</b>	<b>GLASS PARTITIONS &amp; BOISERIES</b>	
2.1	Glass Partitions for offices	page 6
2.2	Sliding panels & Boiseries	page 7
<b>3.</b>	<b>BATHROOMS</b>	
3.1	Toilets, Bidets & Basins	page 8
3.2	Bathtubs and Shower trays	page 9
3.3	Shower Boxes	page 10
3.4	Ceramic Lamps	page 11
3.5	Accessories	page 12
<b>4.</b>	<b>BESPOKE JOINERY &amp; FURNITURE</b>	
4.1	Joinery: residential	page 13
4.2	Joinery: offices	page 14
4.3	Joinery: hospitality	page 15
4.4	Joinery: shops	page 16
<b>5.</b>	<b>MARBLE &amp; STONES</b>	
5.1	Marble	page 17
5.2	Granite, Onyx, Stones & Semi-precious materials	page 18
<b>6.</b>	<b>TILES</b>	
6.1	Ceramic Tiles	page 19
6.2	Bespoke Ceramic Tiles	page 20
6.3	Porcelain Stoneware	page 21
<b>7.</b>	<b>MECHANICAL VENTILATION</b>	
7.1	Room by room mechanical ventilation with air filtration	page 22
7.2	Room by room mechanical ventilation with air filtration & heat recovery	page 23
7.3	Kitchen and bathroom air extraction for humidity absorption	page 24

<b>8.</b>	<b>ELEVATORS &amp; ESCALATORS</b>	
8.1	Energy Saving Lifts & Platforms	page 25
<b>9.</b>	<b>PAINTS &amp; COATINGS</b>	
9.1	Atriathermika Green with certified Clean Air Action for internal use	page 26
9.2	Atriathermika Primers and Paints for internal / external use	page 27
9.3	Grace and Sofia wall decorative paints for internal use	page 28
9.4	Atriafloor decorative paint for internal / external use	page 29
9.5	Afontermo thermal insulation plaster	page 30
<b>10.</b>	<b>SAFETY &amp; SECURITY</b>	
10.1	Fire Hydrant Cabinet "Linea Rodi"	page 31

# 1.1 Glass Doors for internal use

## Characteristics:

- Sliding doors (outside the wall or pocket system) / hinged doors / swinging doors / folding doors
- Aluminium or Stainless Steel sliding system
- Tempered glass 8 or 10 mm thickness
- Different finishes: engraved colour, sandblasting, laquering, tissue between two layers of glass, reproduction of photos or special images on glass, other decorations.





## 1.2 Accessories for doors and windows

- Tilt-and-slide mechanisms for aluminium doors and windows (load capacity up to 300 kg. Possibility to achieve 400 Kg with special roller kit)
- Magnetic-levitation lift and slide system for all materials doors (lifting capacity of 250 kg per meter without height limit for the doors) (*SlideArt MAG*)
- Opening systems for curtain walls
- Special hinges with alignment regulation for perfect installation (*Summa*)
- Innovative hinges with integrated door-closer (*Reklo'*)
- Anti-burglary security hinges (class 3 certified), able to stand a pushing load up to 1000 kg (EB3) (*Mechanica*)
- Panic push-bars with Biocote antibacterial treatment (Pininfarina design) (*Juvarra & Brunelleschi*)
- Handles for standard leaves and for tilt-and-turn. Available with Biocote antibacterial treatment.



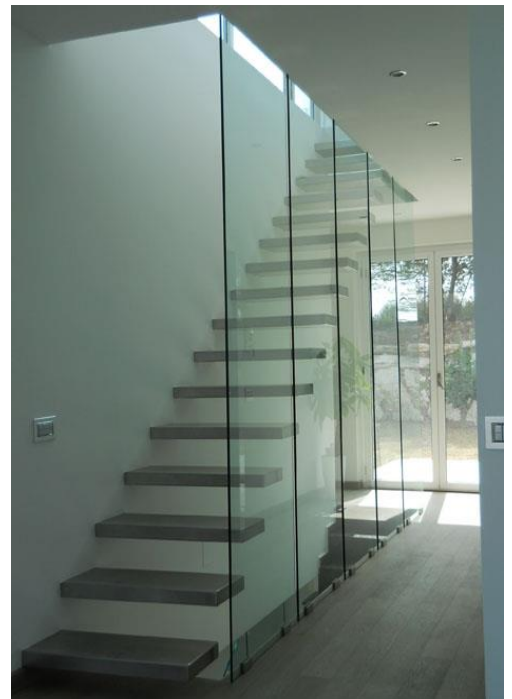
*pininfarina*



## 2.1 Glass Partitions for offices

Characteristics:

- Available with sliding doors or hinged doors
- Different types of frames
- Tempered glass 8 or 10 mm thickness
- Various glass finishes

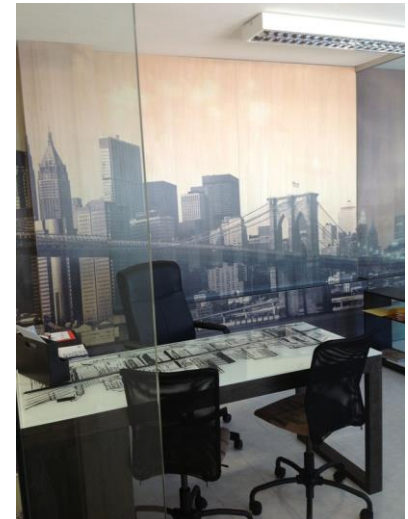




## 2.2 Sliding Panels & Boiserie

Characteristics:

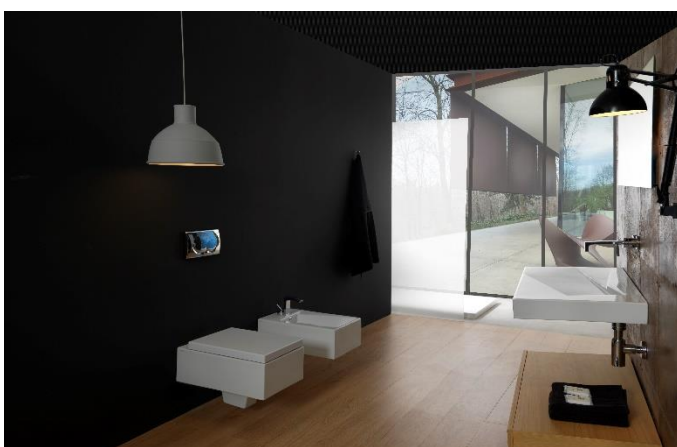
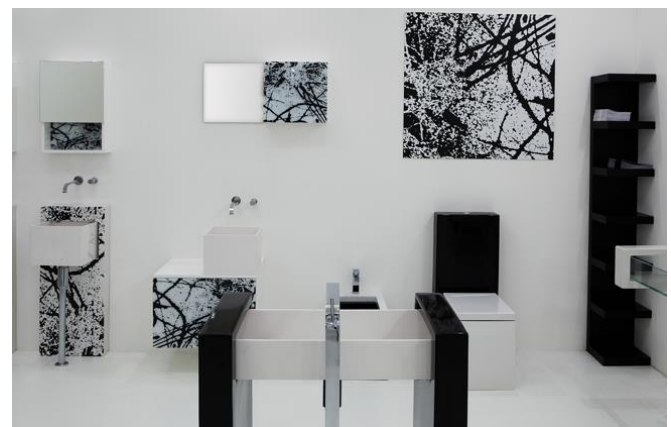
- Glass and Aluminium sliding and fixed panels
- Available with different images and / or photos
- Available with integrated doors (sliding doors or hinged doors)
- Different sizes, possibility to have smaller panels to be hang to the wall as paintings.



## 3.1 Toilets, Bidets & Basins

### Characteristics:

- Combinations of crystal & ceramic
- Available in 17 different colours
- Different shapes from classic line (*Time Collection*) to modern design
- New SMART CLEAN exhaust system: rimless toilet for higher cleanliness and hygiene
- New quick release system of the seat cover, which can be unhooked and removed very simply and rapidly for higher cleanliness and hygiene

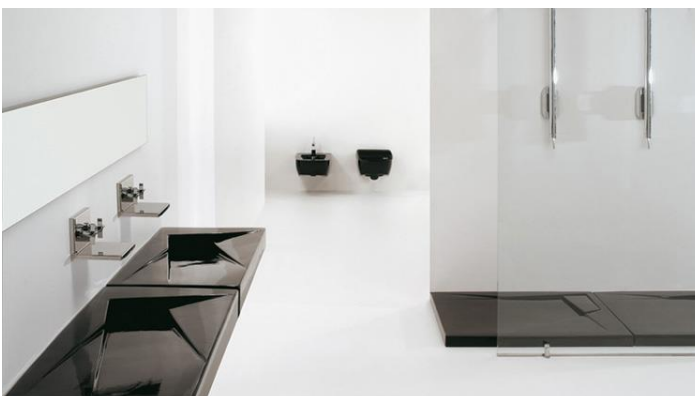




## 3.2 Bathtubs & Shower Trays

Characteristics:

- Available in different colours (white, black, red, grey, brown, etc.)
- Different shapes and modern design
- Possibility to match them with toilets, bidets and basin of the same lines



## 3.3 Shower Boxes

Characteristics:

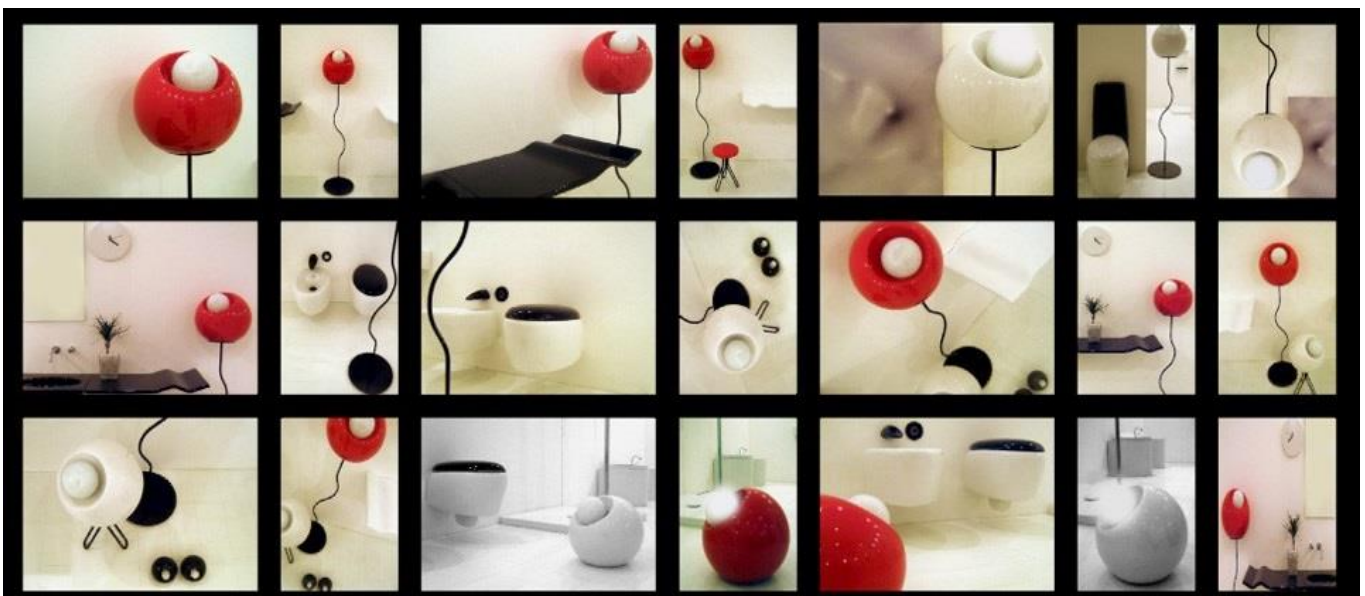
- Tempered glass 8 or 10 mm thickness
- Different finishes: engraved colour, sandblasting, laquering, tissue between two layers of glass, reproduction of photos or special images on glass, other decorations.



## 3.4 Ceramic Lamps

### Characteristics:

- Bool is a series of ceramic lamps inspired by old spherical bulb lamps, reinterpreted in an ironic and contemporary style.
- Available in 12 colours and two sizes: diameter 40 cm and 16 cm.
- Available in the suspended and wall mounted versions.
- The 40 cm bulb type can also be proposed as a floor lamp 160 cm high.

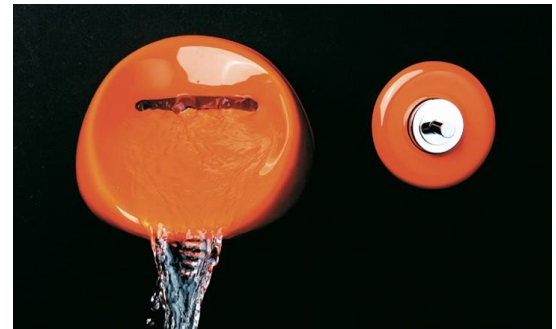




## 3.5 Accessories

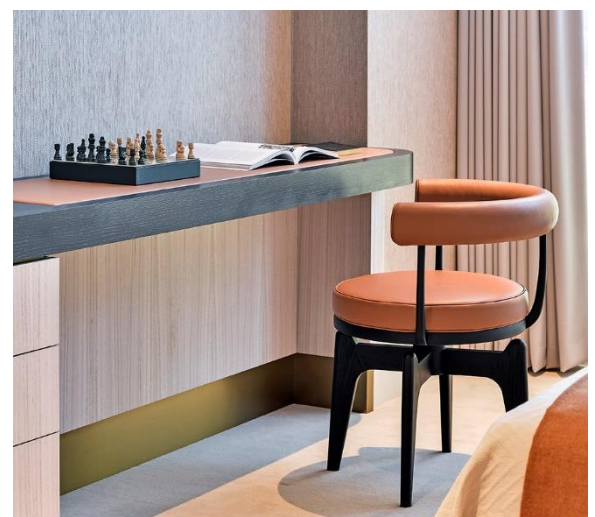
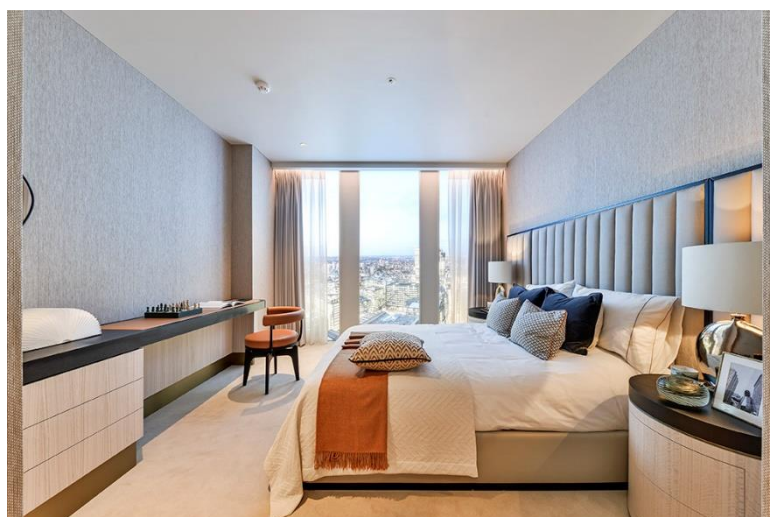
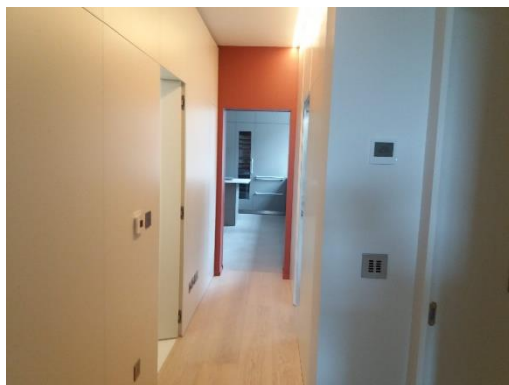
A selected list of accessories for the bathroom:

- Ceramic, wood and glass Shelves and pieces of Furniture
- Stools
- Mirrors
- Towel Holders
- Soap Holders
- Etc.



## 4.1 Joinery: residential

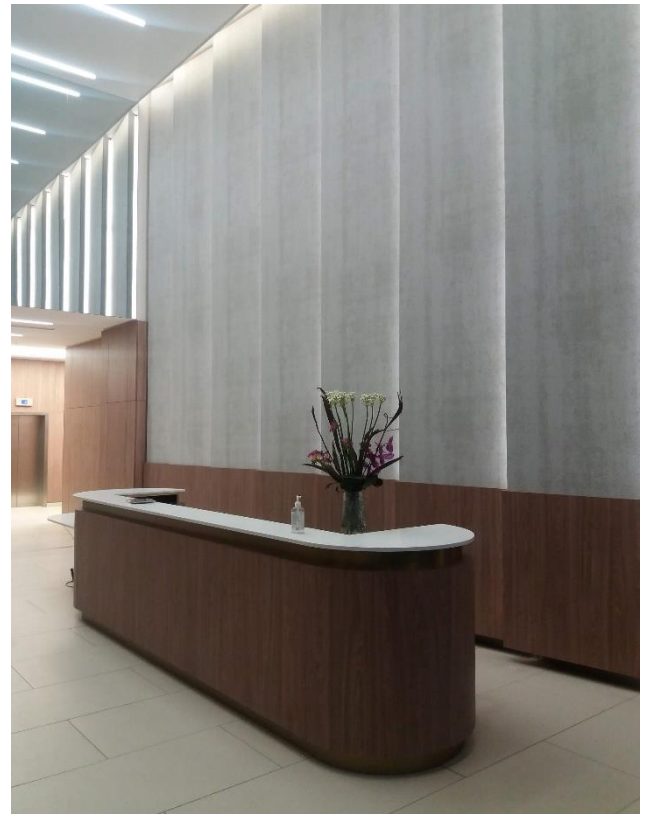
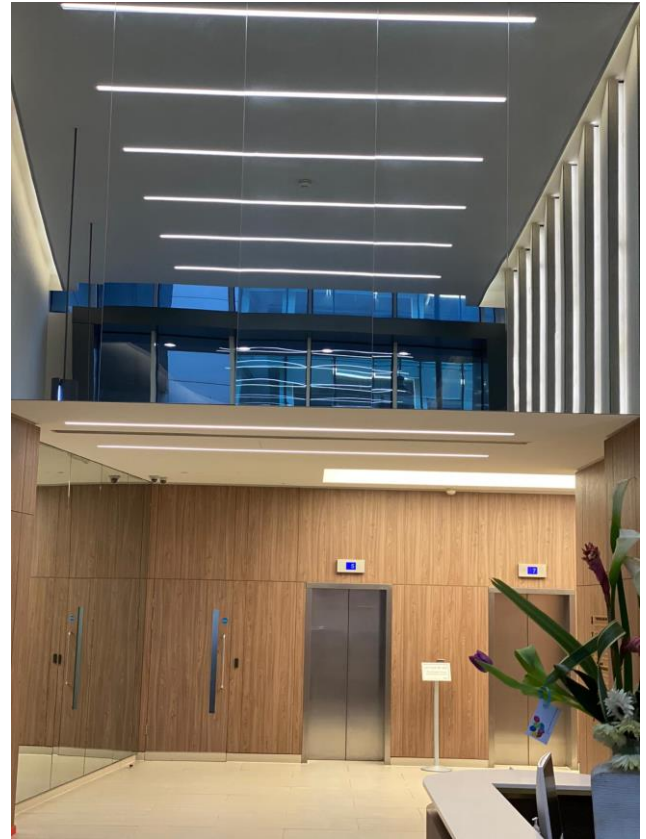
- Artisan-made bespoke joinery for private homes (kitchens, bedrooms, bathrooms, living and dining rooms, studios, etc.)
- Modern and classical style
- Possible combination of different materials
- Special solutions for empty spaces below stairs, pillars, wall niches, wine cellars, etc.
- High customization





## 4.2 Joinery: offices

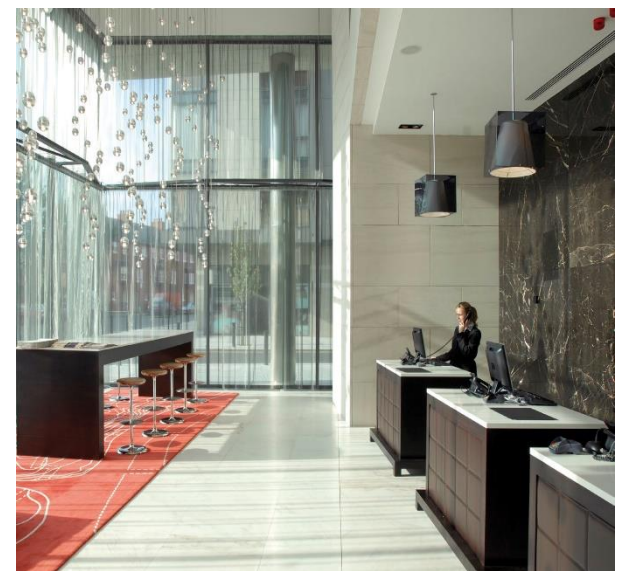
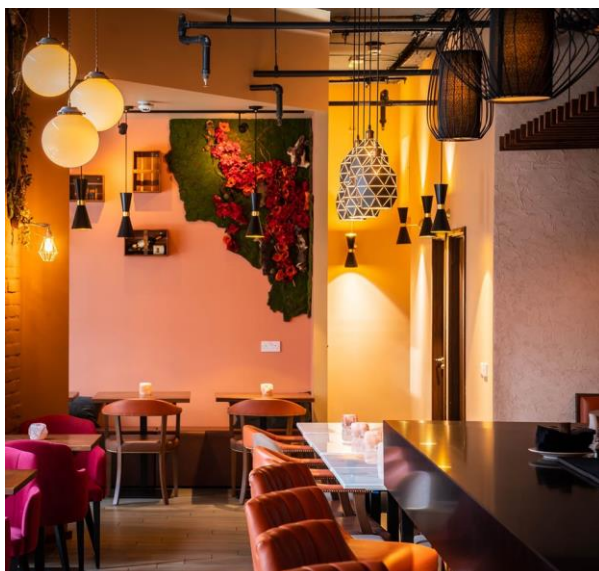
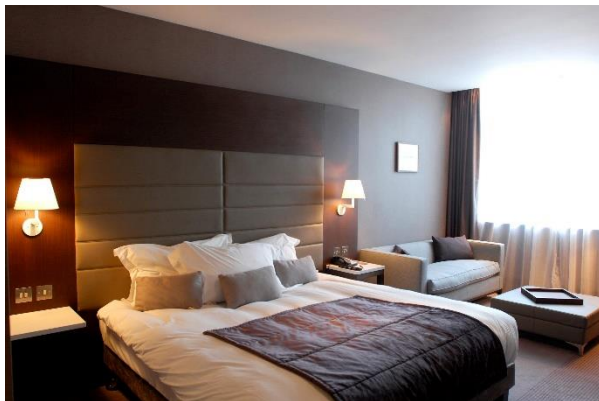
- Artisan-made bespoke joinery for offices, meeting rooms, receptions and other common areas
- Great attention for the specific needs of Architects and Interior Designers in order to create unique products which can perfectly fit designed spaces
- Choice of different materials starting from wood and combining it with metal, texture, marble, etc.





## 4.3 Joinery: hospitality

- Artisan-made bespoke joinery for hotels, bars, restaurants, etc.
- Great attention for the specific needs of Architects and Interior Designers in order to create unique products which can perfectly fit designed spaces
- Choice of different materials starting from wood and combining it with metal, texture, marble, etc.





## 4.4 Joinery: shops

- Artisan-made bespoke joinery
- Great attention for the specific needs of Architects and Interior Designers in order to create unique products which can perfectly fit designed spaces
- Choice of different materials starting from wood and combining it with metal, texture, marble, etc.





## 5.1 Marbles

- Accurate selection of materials
- Architects, Designers and Customers can personally visit the factory and choose the preferred slabs of marble
- Different marble finishes (polished, sandblasted, engraved, etc.)
- Strong experimentation as marble can be processed by laser, water, flame, etc.
- Possibility of 3D effects
- Possibility of texture effects
- Possibility to create small decorations.



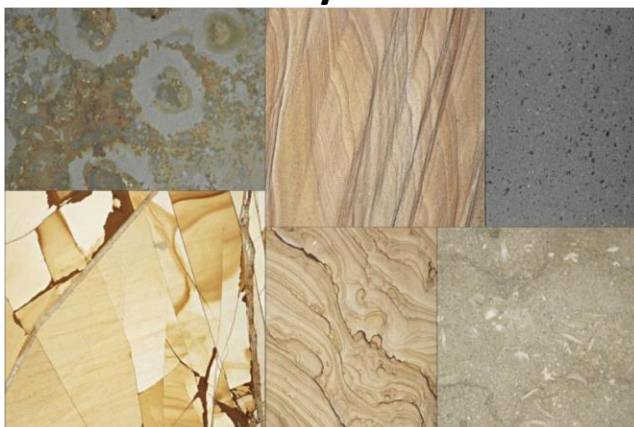


## 5.2 Granite, Onyx, Stones & Semi-precious materials

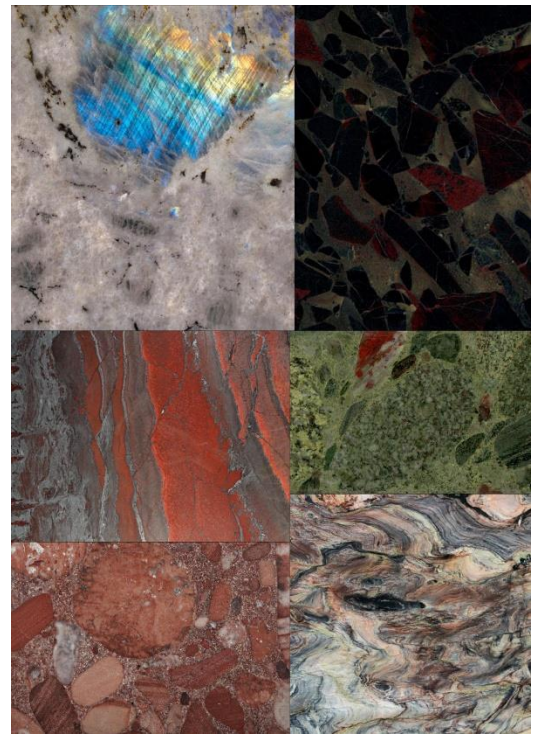
- Accurate selection of material
- Architects, Designers and Customers can personally visit the factory and choose the preferred material
- Different finishes and combinations
- Strong experimentation



**Onyx**



**Stone**



**Granite**



**Semi-precious materials**



## 6.1 Ceramic Tiles

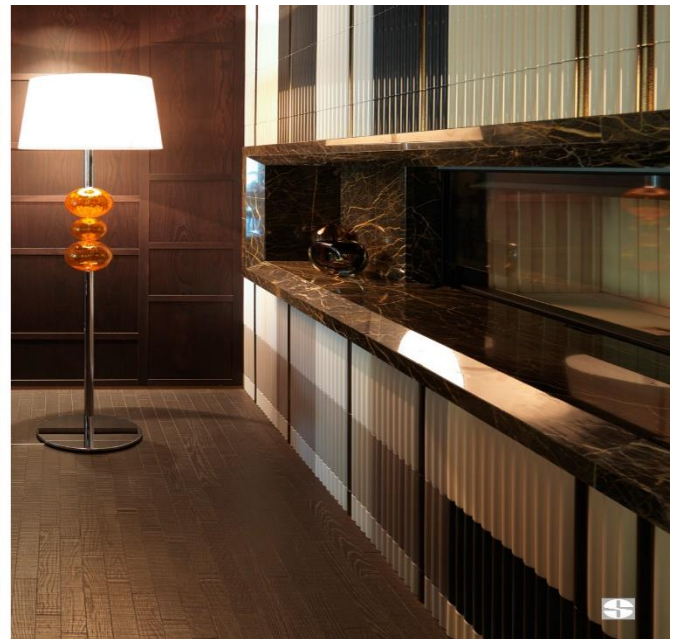
- Accurate selection of material
- Many combinations of colours, shapes, finishes
- Ideal for homes (kitchens, bathrooms, living-rooms, etc.), shops, bars, restaurants.
- Unlimited surface effects: polished, matt, crackle, antiqued, lacquered, transparent, silk, metallic, glossy, etc.





## 6.2 Bespoke Ceramic Tiles

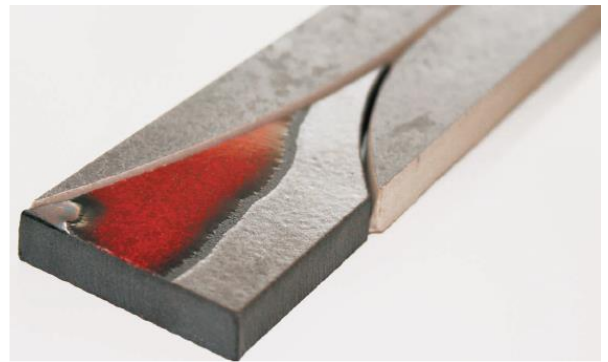
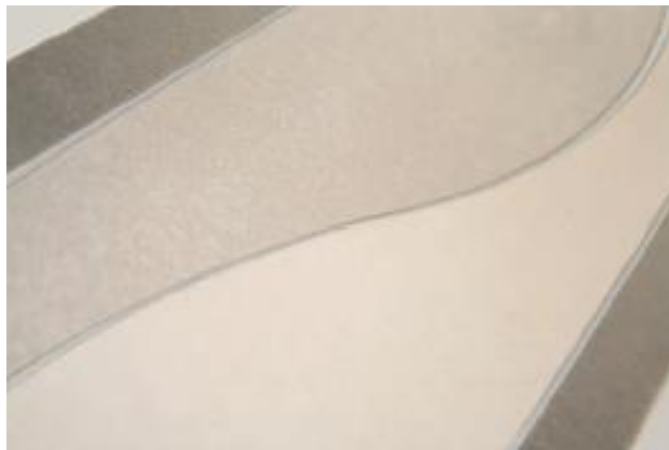
- Accurate selection of material
- Many combinations of colours, shapes, finishes
- Ideal for kitchens, bathrooms, shops, bars, restaurants, etc.
- Unlimited surface effects: polished, matt, crackle, antiqued, lacquered, transparent, silk, metallic, glossy, etc.
- Customers can choose sizes, finishes, colours, shapes and challenge us with their ideas and dreams





## 6.3 Porcelain Stoneware

- Accurate selection of material
- Many combinations of colours, shapes, finishes and sizes
- Ideal for indoor and outdoor use
- Different surface effects



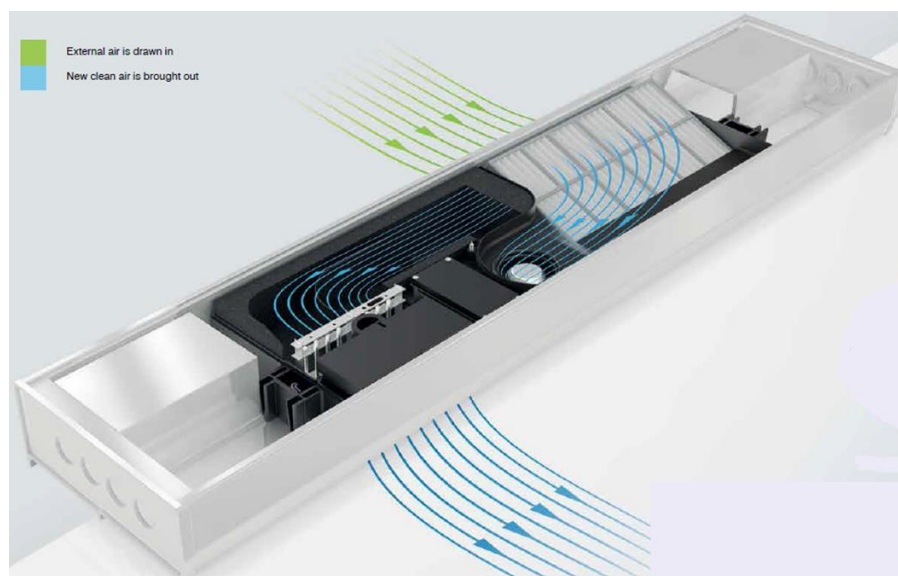
## 7.1 Room by room mechanical ventilation with air filtration

*pininfarina*

### AIRCARE AF

Characteristics:

- **Air exchange** without opening windows:
  - no heat dispersion during winter, no entrance of hot air during summer
  - no entrance of smog, pollution, pollen, noise, bacteria from the outside
  - relative humidity inside home is kept under control eliminating the risk of condensation, mould, fungus.
- **Air Quality** – Aircare filters eliminate up to 98% of small particulates, together with pollen, dust mites, spores and bacteria. They help to eliminate excess CO<sub>2</sub> in the environment as well as excess relative humidity, dilute VOC's and eliminate Radon risk.
- **Energy Saving** – Windows do not need to be opened so heat is not dispersed. Thanks to proprietary software and specific sensors the amount of air needed for adequate exchange is guaranteed and electricity consumption is minimised.
- **Comfort** – Aircare works perfectly with all heating and air conditioning systems. Air exchange is guaranteed without users noticing anything in terms of noise and heat effects.
- **Installation:** Easy and quick installation, ideal for both new buildings and refurbishment of existing ones. Installation either between the upper frame of the window and the wall or recessed (above, below or on one side of the window)
- Ideal for residential, office, hospitality, retail, healthcare applications
- Pininfarina design.





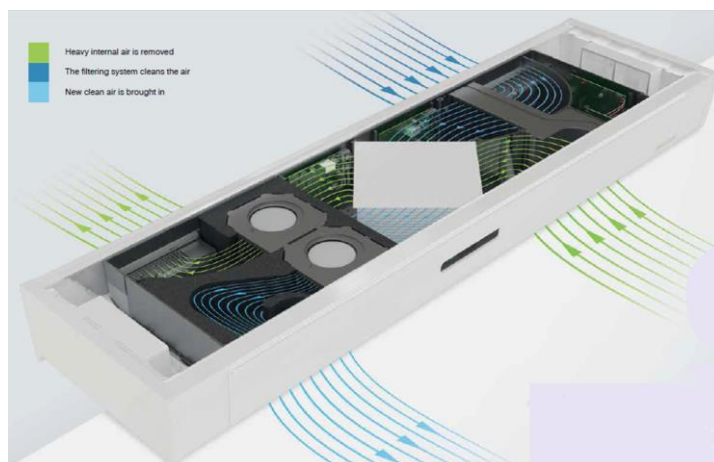
## 7.2 Room by room mechanical ventilation with air filtration and heat recovery

*pininfarina*

### AIRCARE ES

Characteristics:

- **Heat Recovery** - it is a regenerative system, no condensate inside the device and no drainage pipe. The heat exchanger is produced with semi permeable membranes that allow the drying of the air. The system balances the outlet and inlet air flows when indoor/outdoor conditions could lead to condensation. This means that the device will always work with the same certified thermal efficiency.
- **Air exchange** without opening windows:
  - no heat dispersion during winter, no entrance of hot air during summer
  - no entrance of smog, pollution, pollen, noise, bacteria from the outside
  - relative humidity inside home is kept under control eliminating the risk of condensation, mould, fungus.
- **Air Quality** – Aircare filters eliminate up to 98% of small particulates, together with pollen, dust mites, spores and bacteria. They help to eliminate excess CO<sub>2</sub> in the environment as well as excess relative humidity, dilute VOC's and eliminate Radon risk.
- **Energy Saving** – Windows do not need to be opened so heat is not dispersed. Thanks to proprietary software and specific sensors the amount of air needed for adequate exchange is guaranteed and electricity consumption is minimised.
- **Comfort** – Aircare works perfectly with all heating and air conditioning systems. Air exchange is guaranteed without users noticing anything in terms of noise and heat effects.
- **Installation:** Easy and quick installation, ideal for both new buildings and refurbishment of existing ones. Installation either between the upper frame of the window and the wall or recessed (above, below or on one side of the window)
- Ideal for residential, office, hospitality, retail, healthcare applications
- Pininfarina design.



## 7.3 Kitchen and Bathroom air extraction for humidity absorption

*pininfarina*

### AIRCARE AE

Characteristics:

- It ensures fast and effective removal of humidity and unpleasant odours from bathrooms and kitchens
- It can be controlled manually or automatically
- It is provided with a detector or hygrometer that either turns on or off to extract air on demand for higher energy saving
- It is provided with an outlet G4 filter to contribute to environmental quality
- Easy and quick installation, ideal for both new buildings and refurbishment of existing ones. Installation either between the upper frame of the window and the wall or recessed (above, below or on one side of the window)
- Ideal for residential, office, hospitality, retail, healthcare applications
- Pininfarina design.



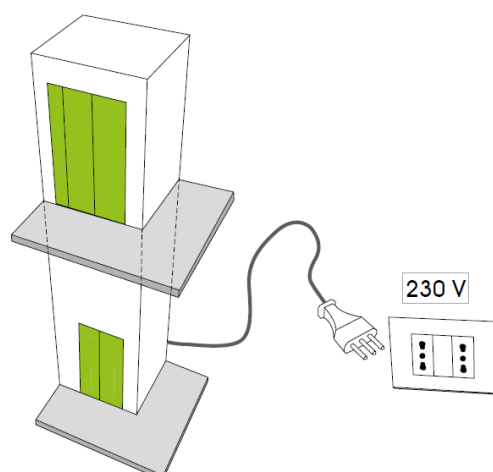
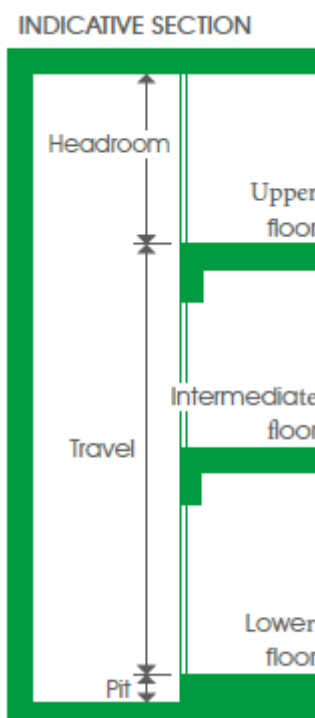


# 8.1 Energy Saving Lifts & Platforms

## Mangusta, Elios, Miniwatt

### Characteristics:

- innovative traction system, patented ARE<sup>®</sup>H2E (High Efficient Energy), which allows the use of only 0.15 kW or 0.30 kW power (according to the model) and the consumption of only half the electricity required by hydraulic elevators.
- The elevator must be connected to the 230 V single-phase mains like a normal electrical appliance. There is no need to ask for special 380 V three-phase power line. When the elevator is installed in a block of flats it can simply be connected to the building light mains.
- The presence of two batteries allows the use of the elevator even in the event of an extended blackout.
- The system grants high efficiency and low energy consumption and can be tailored to reduce the impact on the building.
- Ideal both for new buildings and for the refurbishment of existing residential and commercial properties
- Possibility to install the elevator internally or externally (high flexibility and customization in shape and dimensions)
- No need for deep underground pit (the platform needs only 150 mm pit)
- No need for additional space above the cabin on upper floor (if needed the cabin height can be reduced in order to allow its installation in low ceiling lofts).

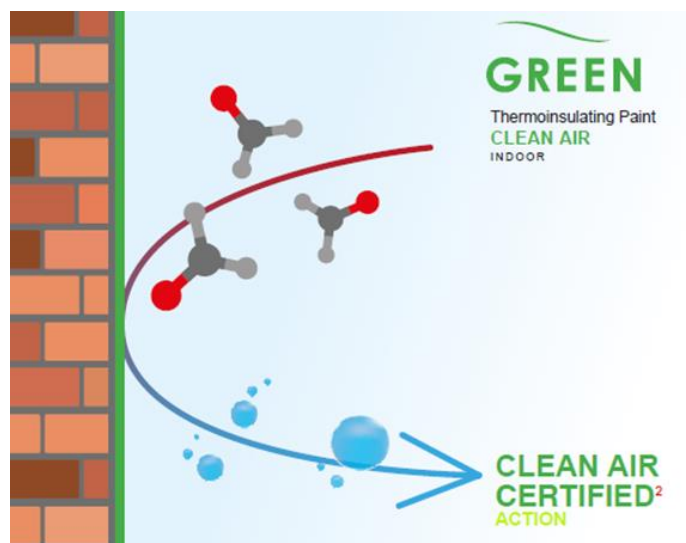


# 9 PAINTS & COATINGS

## 9.1 Atriathermika Green with certified Clean Air Action for internal use

Characteristics:

- Class A+ certified paint which does not contain any harmful substances (EN ISO 16000-9:2006 regulates the level of volatile organic compounds emission)
- Clean Air Certified action: it purifies the air of the treated environments, making them healthy and non-polluted. Formaldehyde and other pollutants present in the environment are dissolved and eliminated in an efficient and lasting way
- Efficiency tested and guaranteed by one of the most recognized and renowned Italian bodies in the field, Istituto Giordano Spa (Technical Report No. 326966)
- Energy Saving product: thanks to 20% higher thermal coefficient than conventional painting it will save money in terms of heating / cooling costs
- It prevents condensation, mould forming and thermal bridges and optimises the Energy Performance of buildings



GREEN



Clean Air Action



Energy Saving



Anti-mould



Anti-condensation



Wellness-Care® Technology



## 9.2 Atriathermika

### Primers and Paints for internal / external use

#### INDOOR APPLICATION

*Sanitising Solution, Primer Termiko, Thermoinsulating Paint, Green Thermoinsulating Paint*

- **THERMOS EFFECT** - The internal temperature is not influenced by external thermal stresses. Warming or refreshing a homogeneous environment is much faster, resulting in real energy saving.
- **LIVING COMFORT AND HEALTH** - The internal temperature is equally distributed, there are no more cold zones and hot areas, so condensation, mould and moisture disappear.
- **ATRIATHERMIKA IS GREEN** - Atriathermika GREEN Clean Air does not contain any harmful substances and purifies the air.
- **NO VOLATILE ORGANIC COMPOUNDS** - Formaldehyde and other pollutants present in the environment are dissolved and eliminated in an efficient and lasting way.

#### OUTDOOR APPLICATION

*Sanitizing Solution, Primer Termiko, Thermoinsulating Paint, Thermoinsulating Coating, Thermoinsulating Coating for roofs and terraces*

- **HEAT REFLECTION** - Atriathermika reflects infrared and UV rays and prevents the heat from transferring through the coating.
- **FULL PROTECTION AGAINST INFILTRATIONS** - High water repellency facilitates rapid evaporation of water and high resistance to smog and atmospheric agents.
- **THERMAL BARRIER** - The low thermal conductivity creates a real barrier that does not allow external heat and cold to penetrate the paint or coating layers.
- **ELIMINATION OF THERMAL BRIDGES** - Condensation, mould and moisture resistance allows the elimination of thermal bridges (especially in the northern walls). Moisture can no longer be generated and attack the areas of buildings where there is greater heat dispersion.



Clean Air Action



Energy Saving



Anti-mould



Anti-condensation

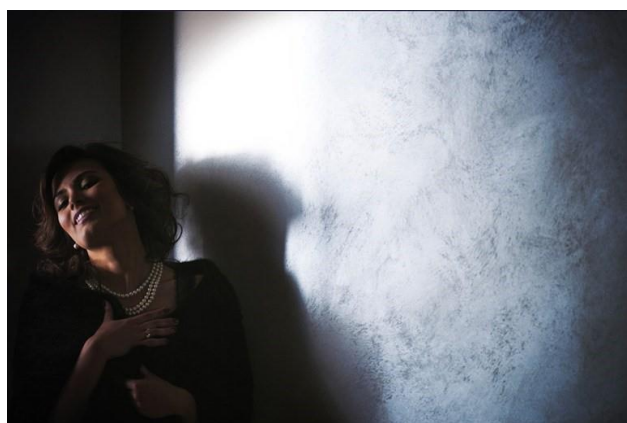


Wellness-Care® Technology

## 9.3 Grace and Sofia wall decorative paints for internal use

Characteristics:

- Thermo Decorative Paintings with anti-mould and anti-condensation properties
- Water based paints containing terpoliacrylic gel resins and special additives
- Easy and quick to apply. Only one layer is sufficient thanks to the high coverage
- Washable and breathable
- Interior living comfort greatly improves thanks to Atria's Wellness-Care technology in decorative paints
- To obtain the best effects it is recommended to treat the wall surface with Atriathermika products for indoor application
- Grace is based on Fluid Metal finishing: magical metallic efflorescence and metamorphic luminous evolutions that create real artwork
- Sofia is a special decorative sand effect painting. It represents innovation in decorating environments combining tradition and technology.



Energy Saving



Anti-mould



Anti-condensation



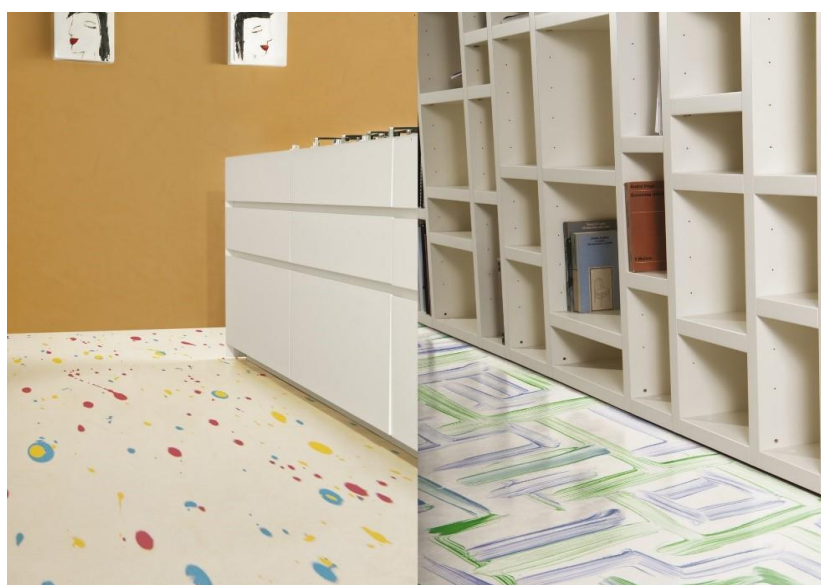
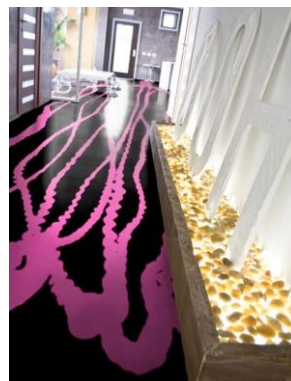
Wellness-Care® Technology



## 9.4 Atriafloor decorative paint for internal / external use

Characteristics:

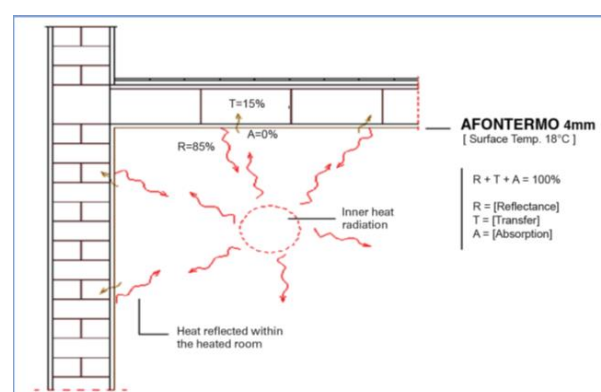
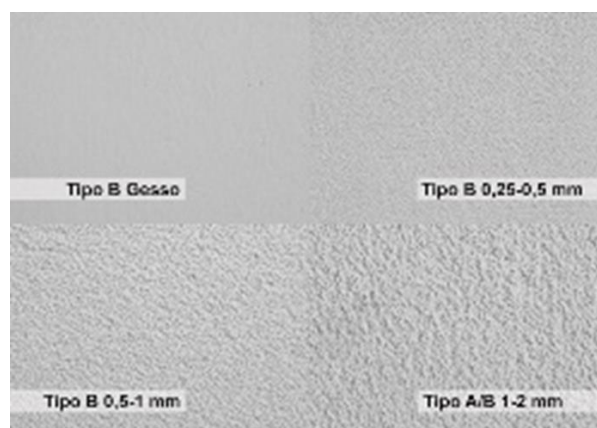
- Complete line of floor paints for indoor and outdoor applications
- Extremely resistant water-based paint. Its composition guarantees maximum durability, great practicality in cleaning, full living comfort, exceptional wear resistance.
- Available in different colours and finishes. It is a sophisticated style solution, made up of endless combinations of techniques, expressions and colours
- Each flooring can have thousands of nuances and as many combinations of application techniques. From classic to modern, through ethnic and contemporary.



## 9.5 Afontermo thermal insulation plaster

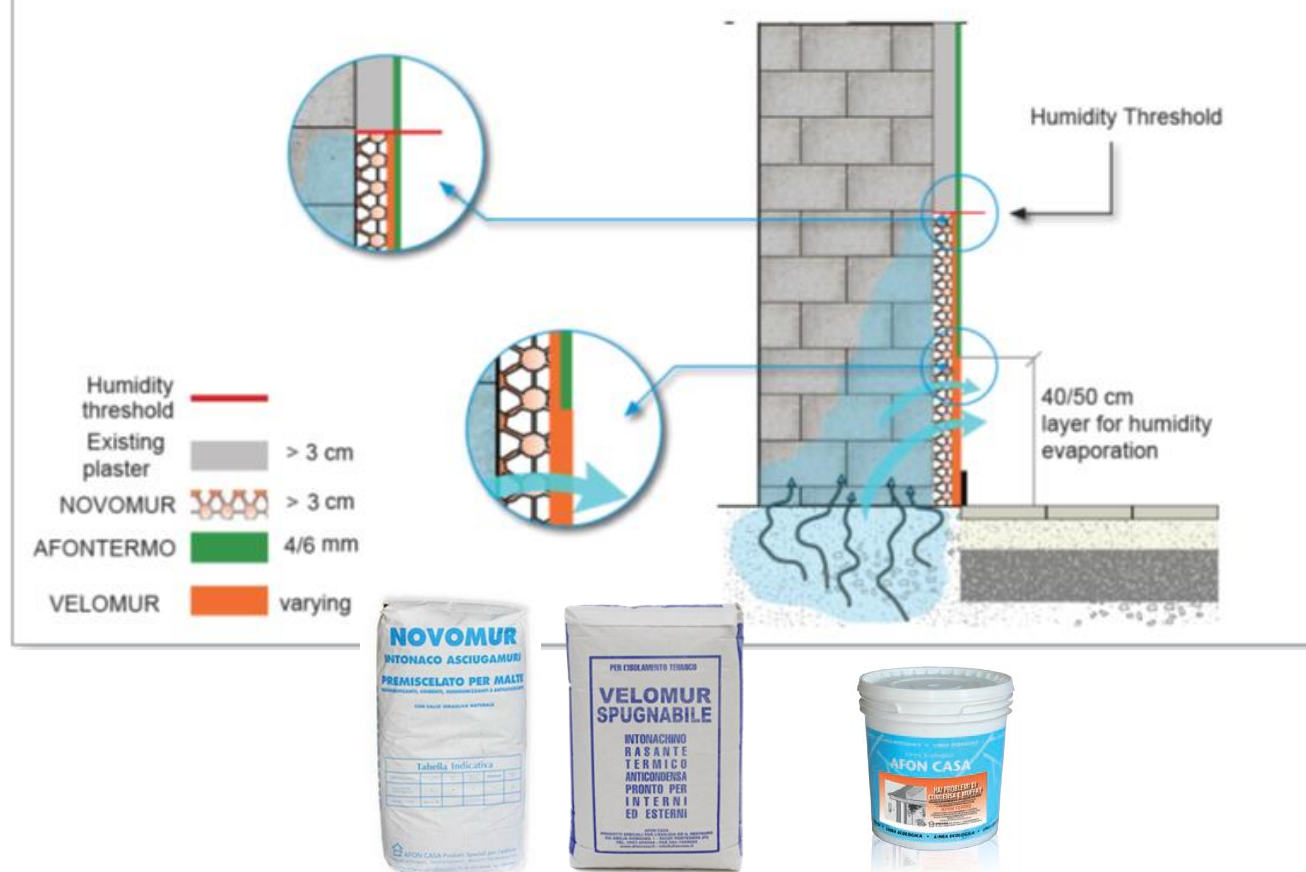
Characteristics:

- Ready-to-use product made of natural insulating aggregates and resins suitable for indoor and outdoor application
- Extra thin anti-condensation breathable and reflective insulating coating
- Average finished thickness of 6 mm indoor and 5 mm outdoor. A few millimeter thick coating does the work of 6 – 7 cm of insulation
- It prevents condensation and mould forming
- It can be combined with NOVOMUR®, a thermo-depressurizing plaster, able to dehumidify the walls subject to any type of moisture: upcoming, ground based and due to condensation
- As a preparation and leveling media prior to AFONTERMO® Thermal Micro Coat it is possible to use VELOMUR®, a plaster finish suitable both for surface finishing and/or thermal insulation.



### AFONTERMO cycle on upcoming humidity

Example: CASES WITH HUMIDITY AT 1 MT HEIGHT:





## 10.1 Fire Hydrant Cabinet “Linea Rodi”

Characteristics:

- Wall mounted fire hydrant cabinet “Giugiaro Design” in carbon steel painted grey RAL7035
- Fully designed and manufactured in Italy
- Dim. 700 x 650 mm, width 200 mm (with 20 or 25 m hose) or 230 mm (with 30 m hose)
- Provided with semi-rigid hose, ball valve, SPRAYJET nozzle K28.

**GIUGIARO**  
D E S I G N

