



Application Type Solutions Catalogue

11/2010



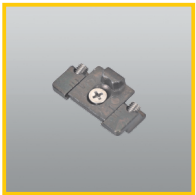
Arm stay **1**
1330SH/14 - 1330SH/16



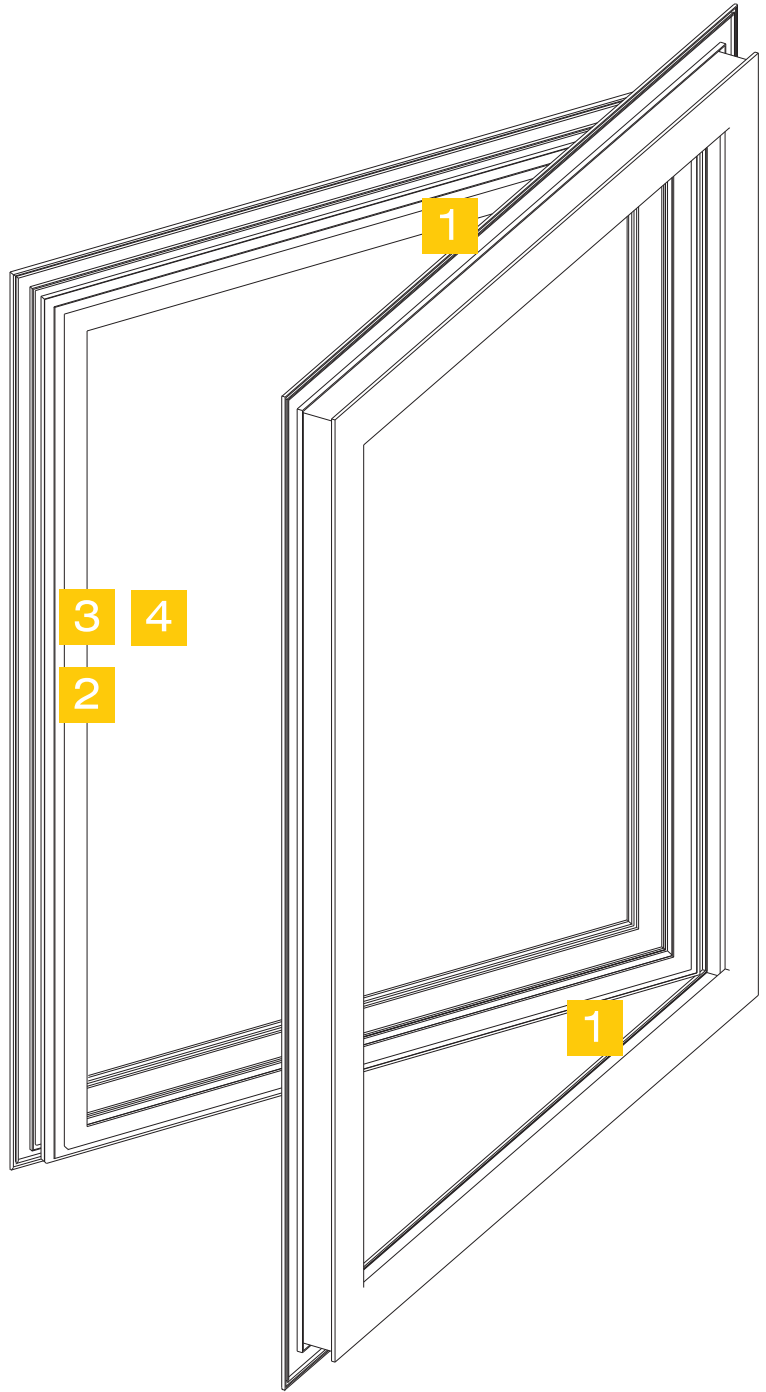
Handle **2**
879.20



Locking piece **3**
1243.710



Adjustable keeper **4**
1243.721

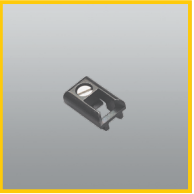




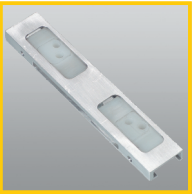
Arm stay **1**
1330SH/20 - 1330SH/24 -
1330SH/28



Handle **2**
876 - 879.2



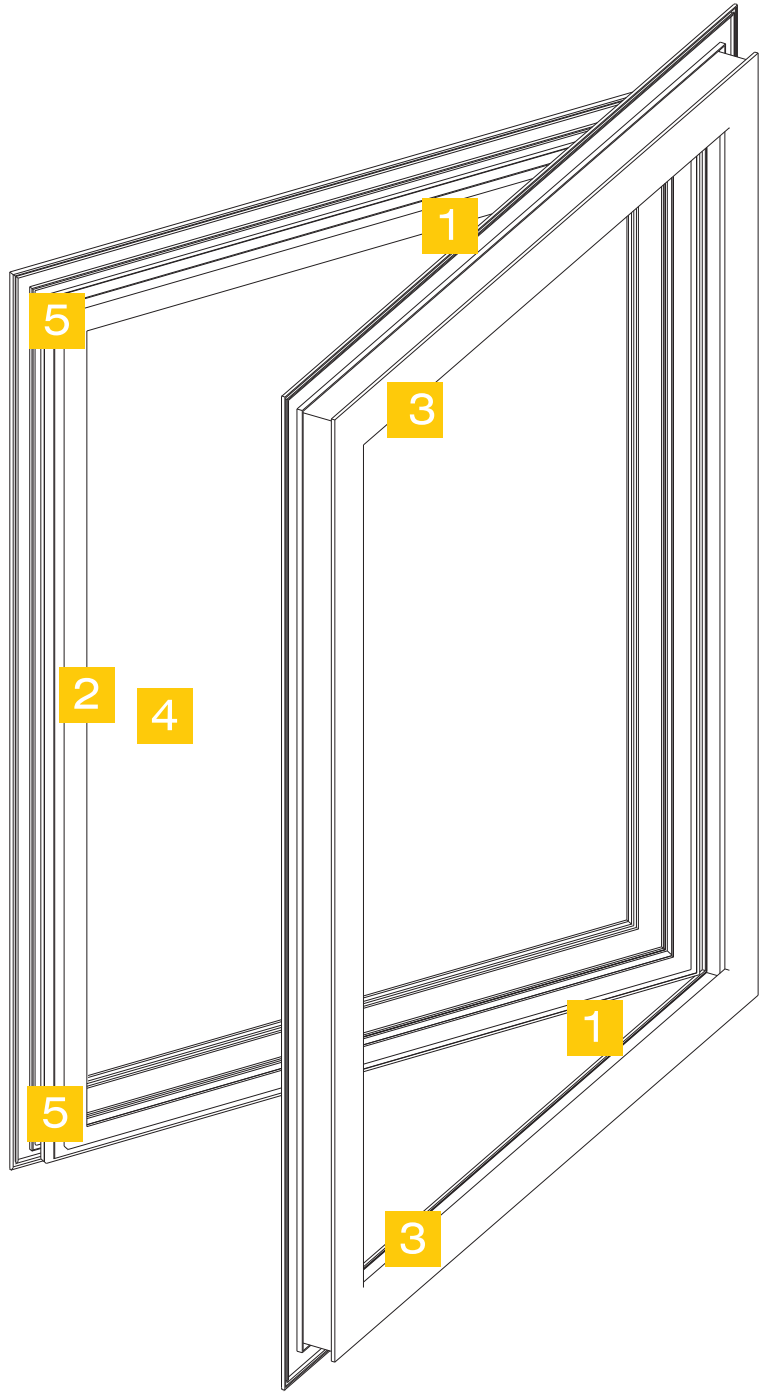
Keeper **3**
1404



Internal mechanism **4**
1475.9 - 1475.800



Terminal rod closing piece **5**
1485 - 1486 - 1487.1

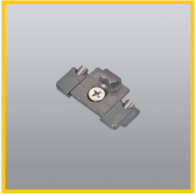




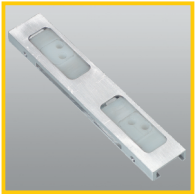
Arm stay 1
1330SH/20 - 1330SH/24 -
1330SH/28



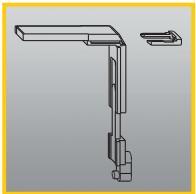
Handle 2
876 - 879.2



Adjustable keeper 3
1243.721



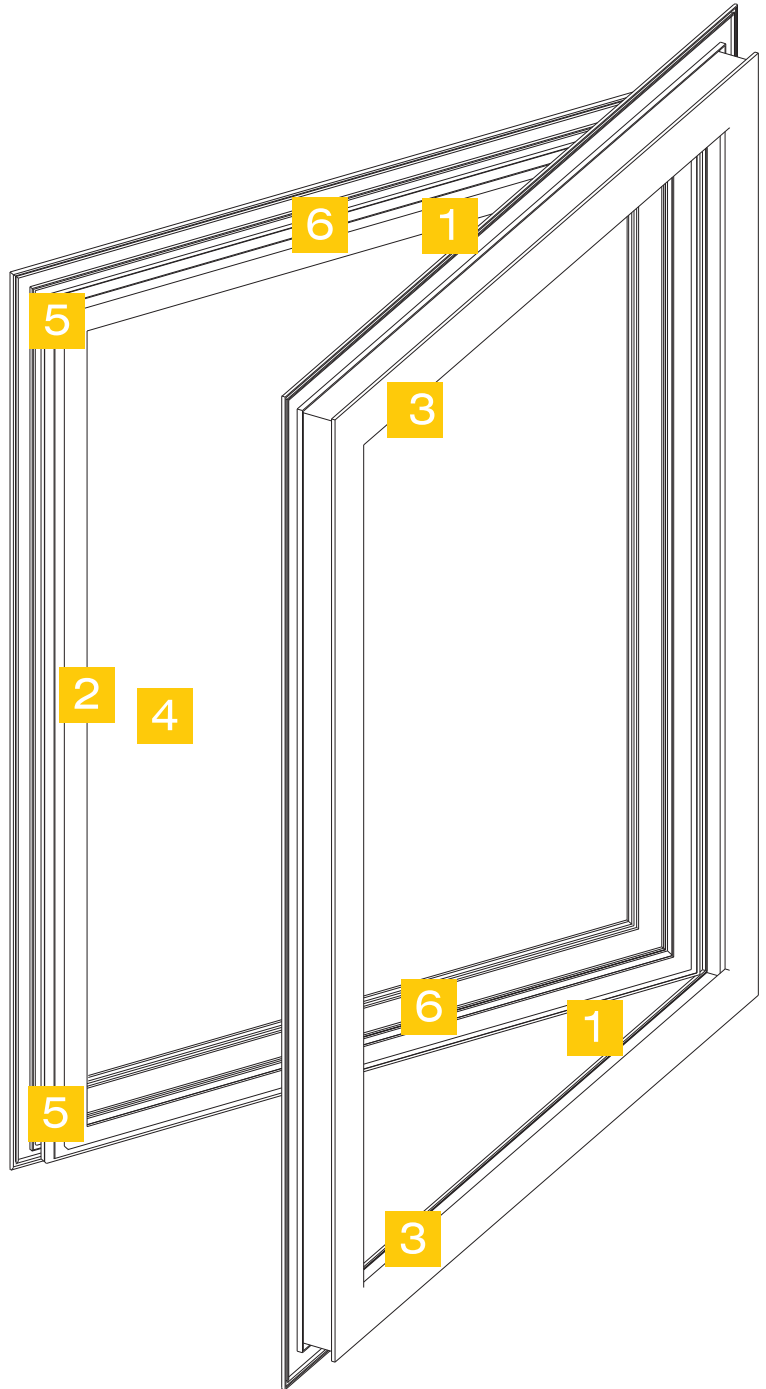
Internal mechanism 4
1475.9 - 1475.800



Corner device 5
1243.790



Terminal locking piece 6
1465

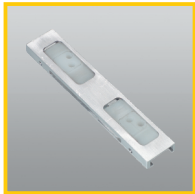




Arm stay 1
1330SH/20 - 1330SH/24 -
1330SH/28



Handle 2
876 - 879.2



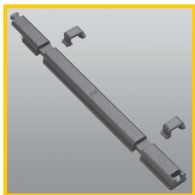
Internal mechanism 3
1475.9 - 1475.800



Terminal rod closing piece 4
1485 - 1486 - 1487.1



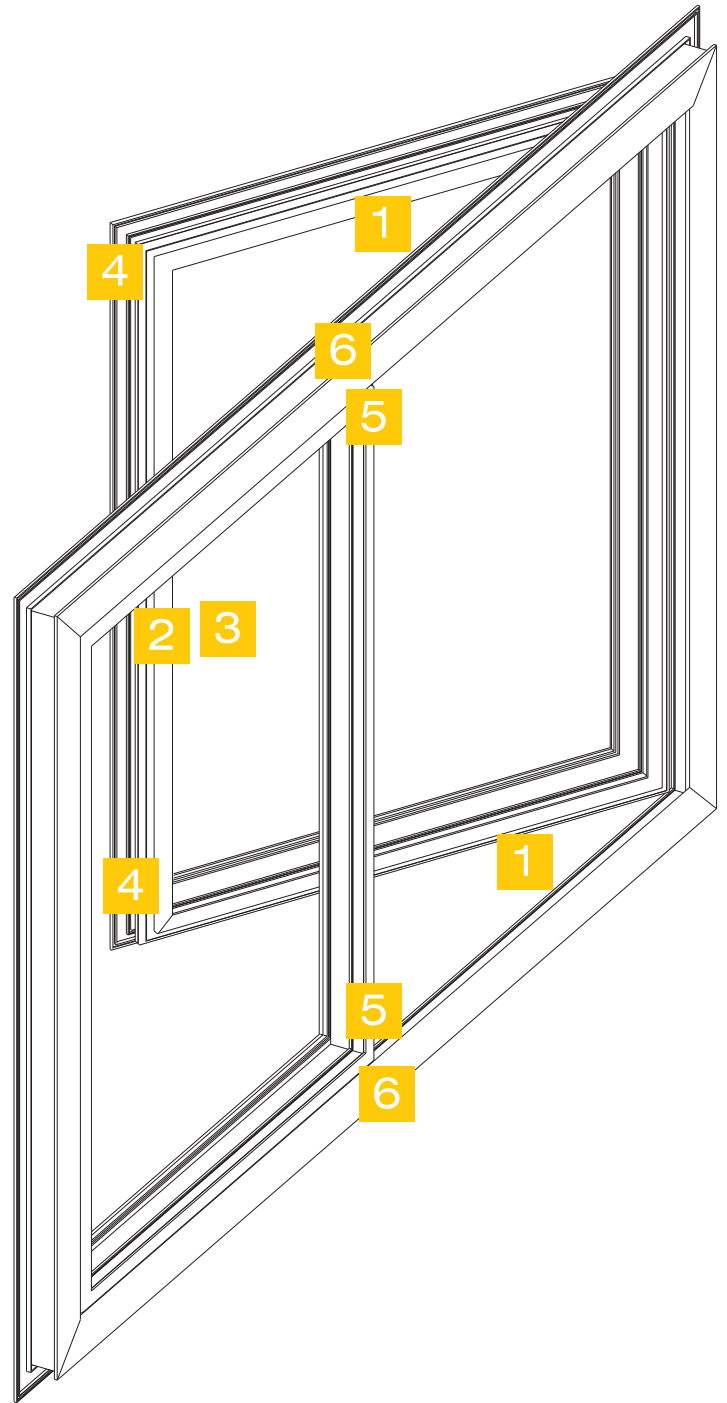
Clamp bolt 5
1541.2



Extension rod 5
1541.802



Double keeper 6
1415 - 1416.5





Handle

870.1 - 870.2 - 879.2

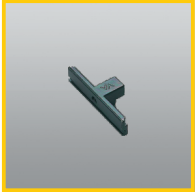
1



Hinge

1115 - 1121 - 1124.30

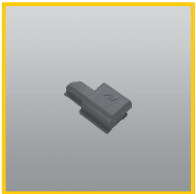
2



Double keeper

1414 - 1416.5 - 1404

3



Connection piece

1484.4 - 1481

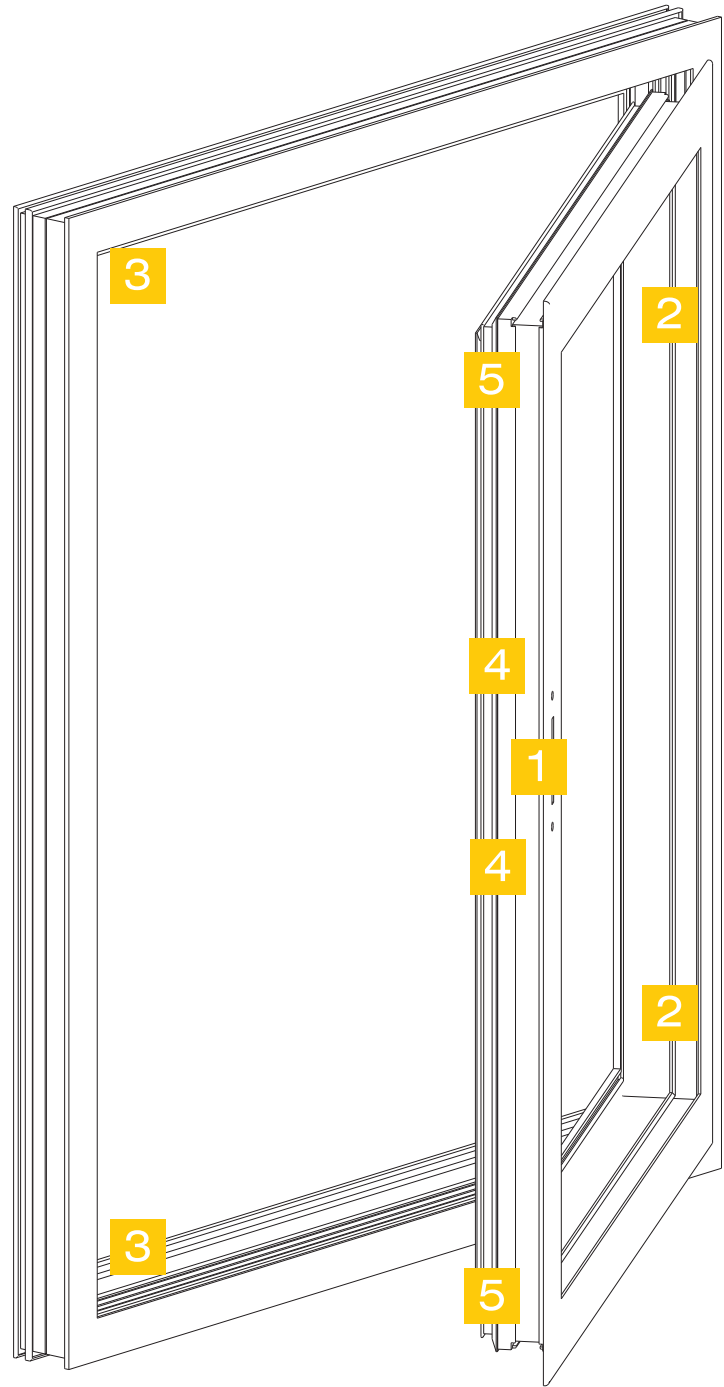
4



Terminal rod closing piece

1485 - 1486 - 1487.1

5

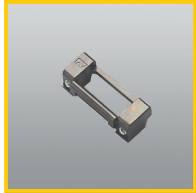




Handle 1
870.1 - 870.2 - 879.2



Hinge 2
1115 - 1121 - 1124.30



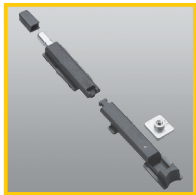
Double keeper 3
1415 - 1416.5



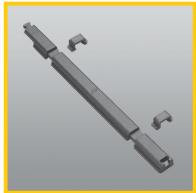
Connection piece 4
1481 - 1484.4



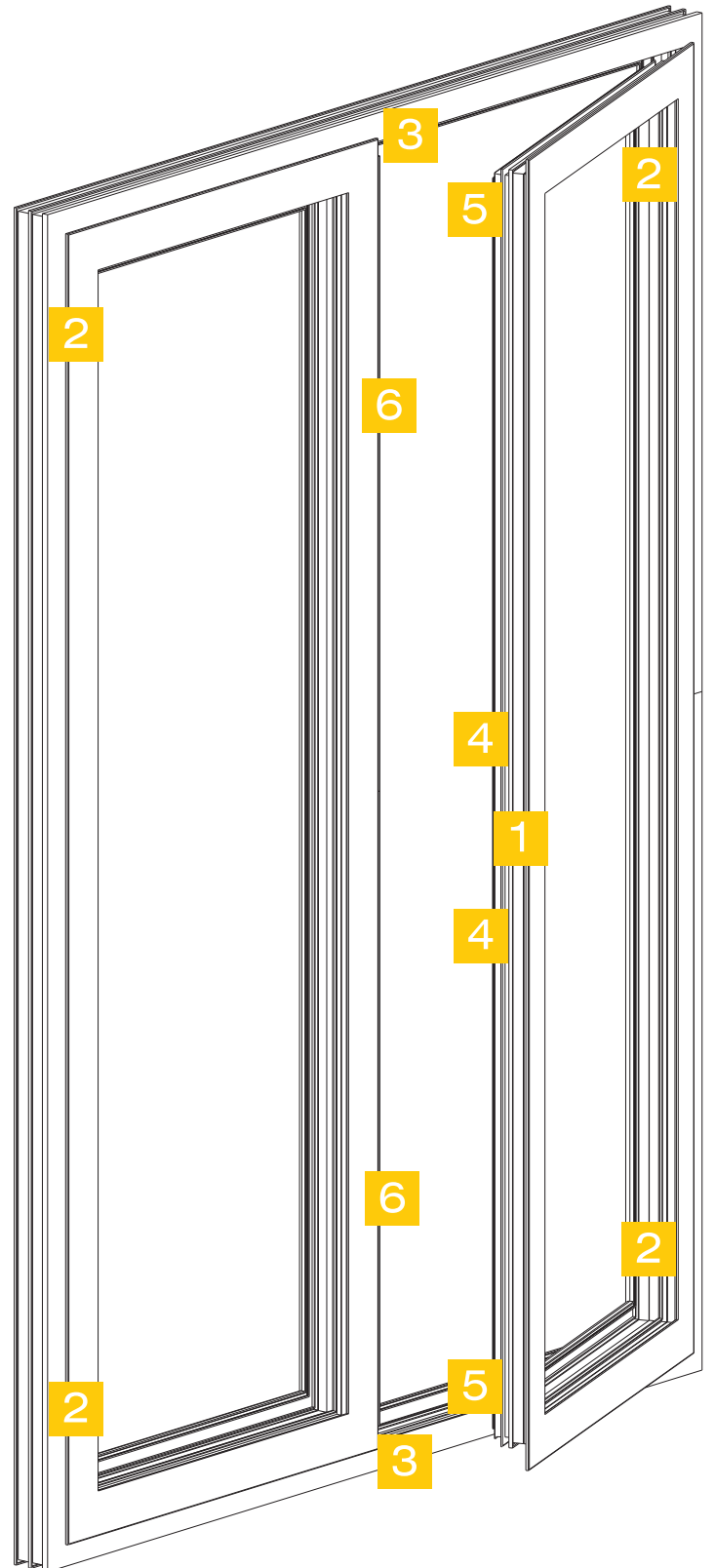
Terminal rod closing piece 5
1485 - 1486 - 1487.1



Bolts 6
1541 - 3200.850



Extension part
1541.800





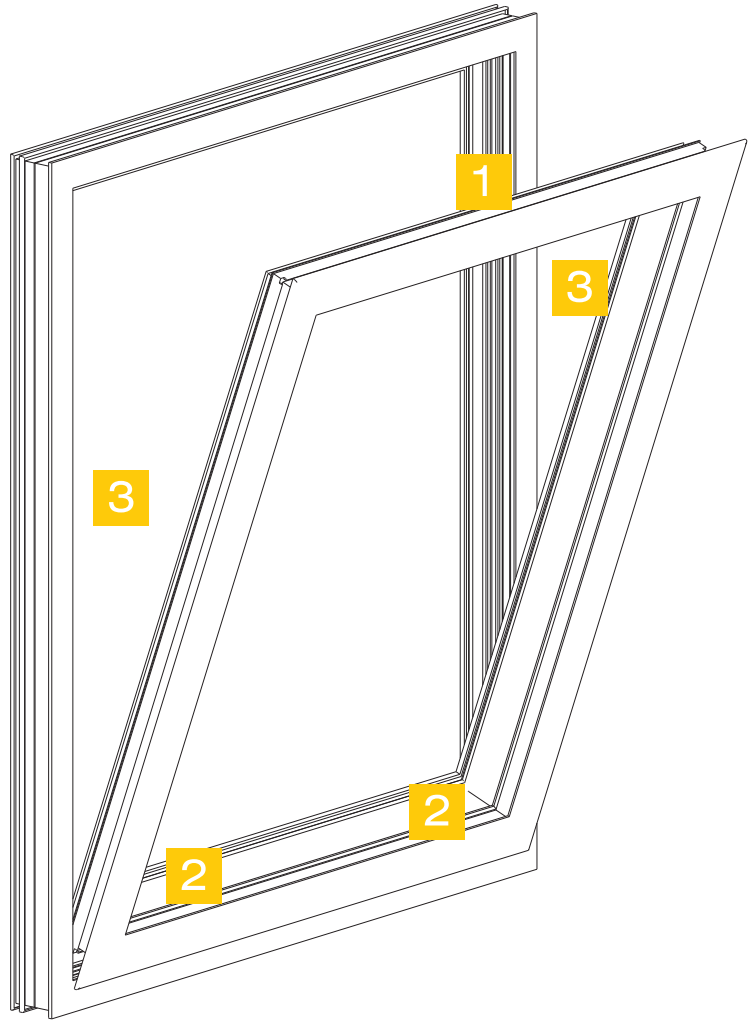
Catch **1**
1360 - 1370.1 - 1390.1

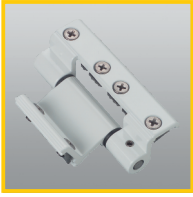


Hinge **2**
1115 - 1121



Arm stay **3**
1341 - 1344





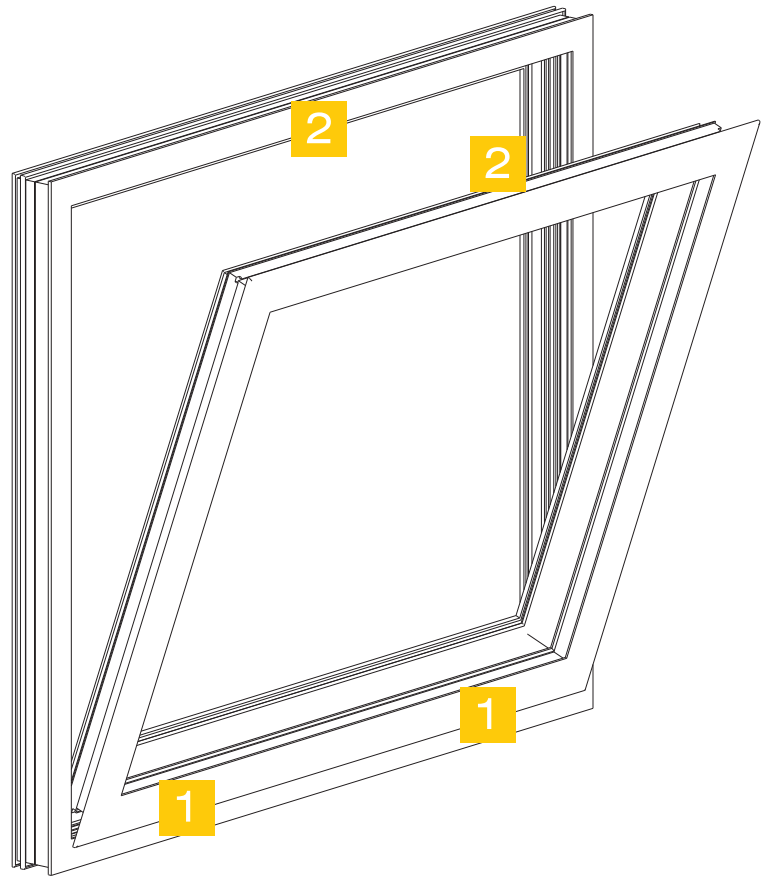
Hinge 1
1122 - 1122.200



Fanlight opener 2
F6 - F7



Fanlight opener
F6.R





Arm stay 1
1330ST/14 - 1330ST/16



Height adjustment device
1330.801



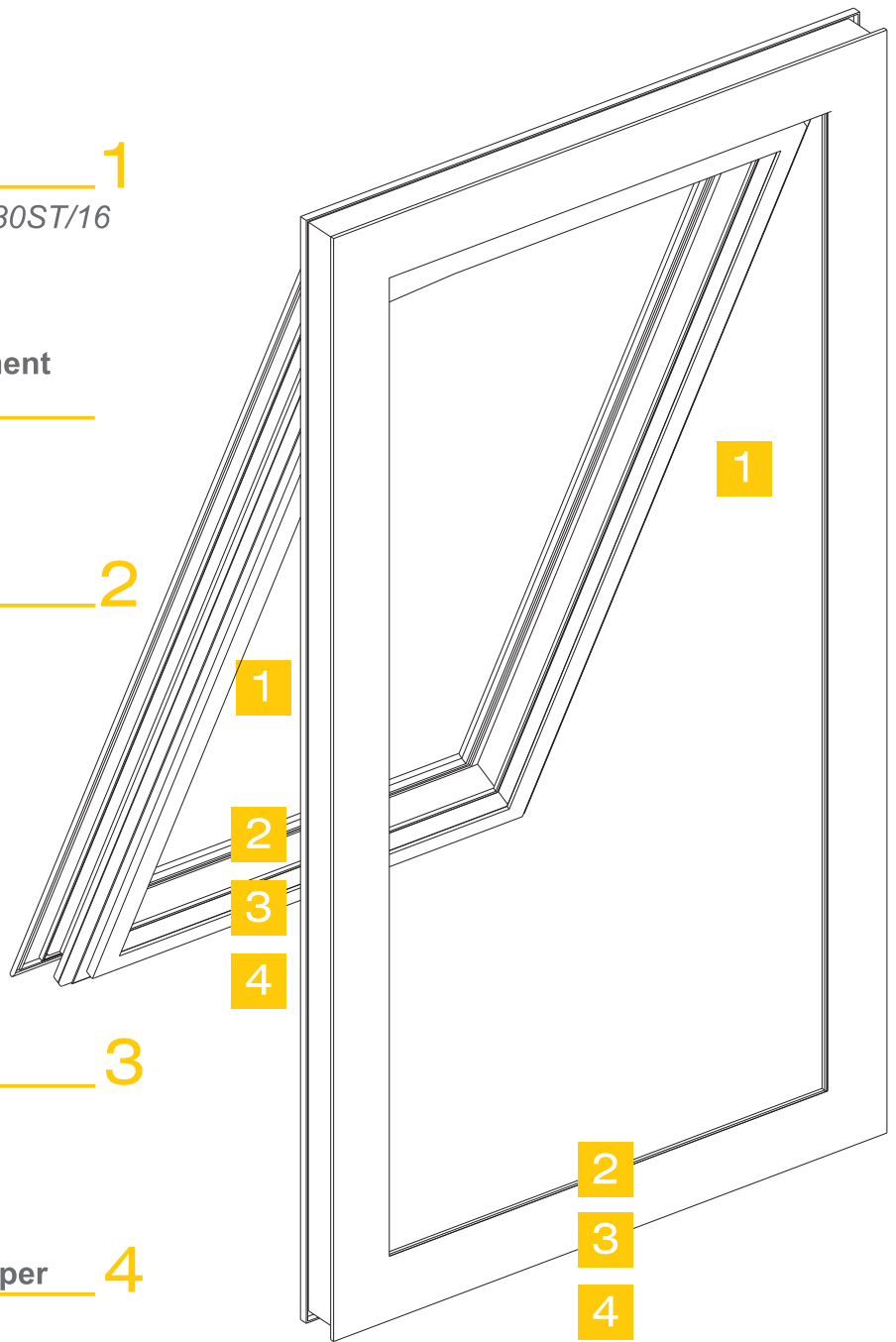
Handle 2
879.20



Locking piece 3
1243.710



Adjustable keeper 4
1243.721



Top hung window open out (4 locking points)



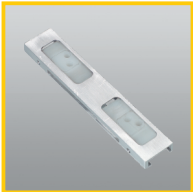
Arm stay 1
 1330HD/20 - 1330HD/24 -
 1330HD/28



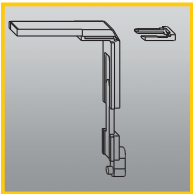
Height adjustment device
 1330.801



Handle 2
 879.2



Internal mechanism 3
 1475.6 - 1475.800



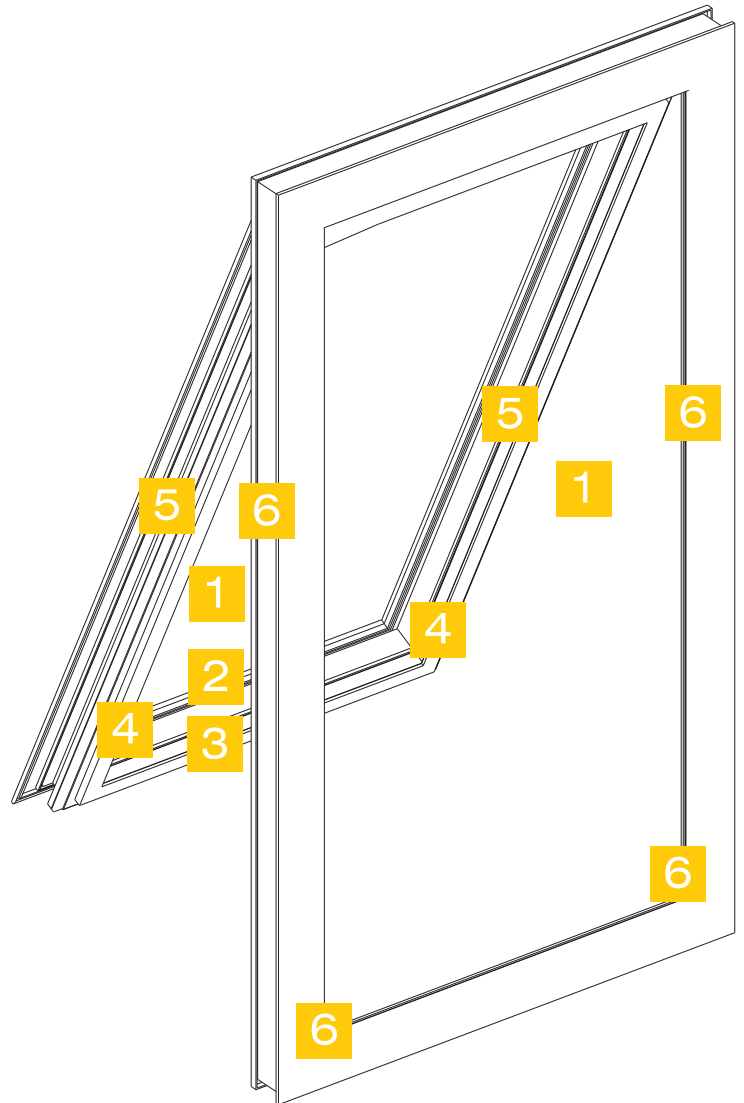
Corner device 4
 1243.790



Terminal locking piece 5
 1465



Adjustable keeper 6
 1243.721





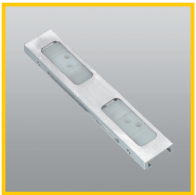
Arm stay 1
1330HD/20 - 1330HD/24 -
1330HD/28



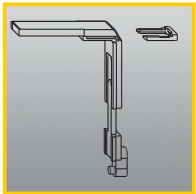
Height adjustment device 1
1330.801



Handle 2
879.2



Internal mechanism 3
1475.6 - 1475.800



Corner device 4
1243.790



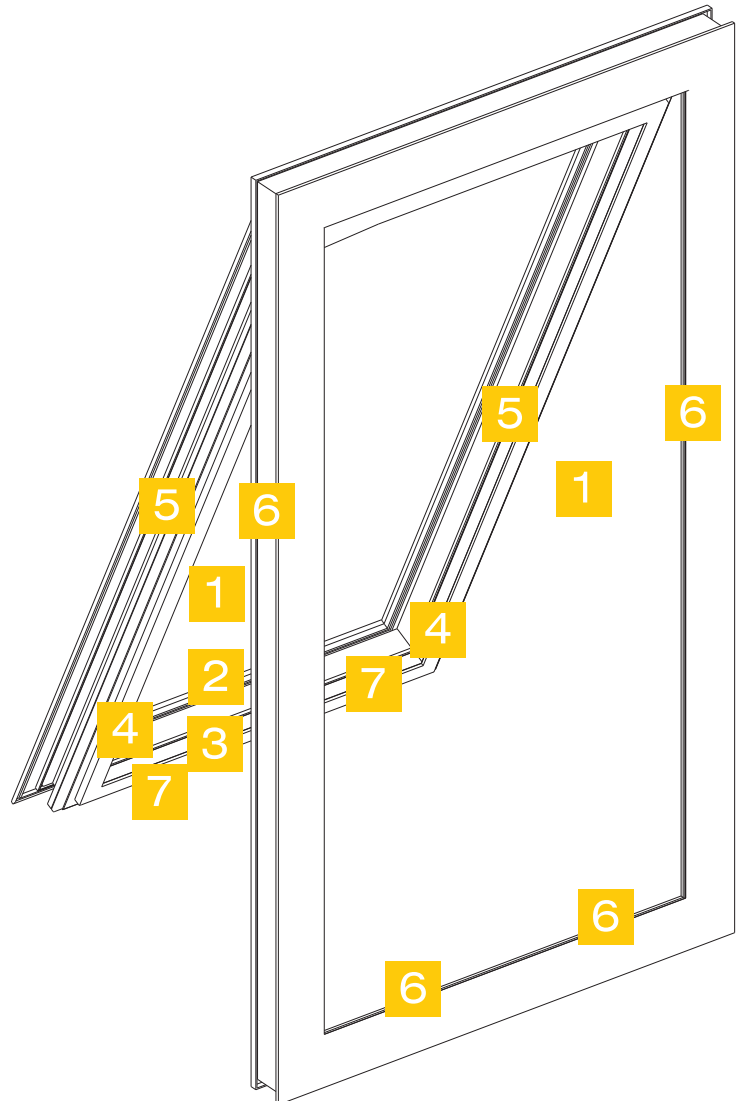
Terminal locking piece 5
1465



Adjustable keeper 6
1243.721



Locking piece 7
1243.710





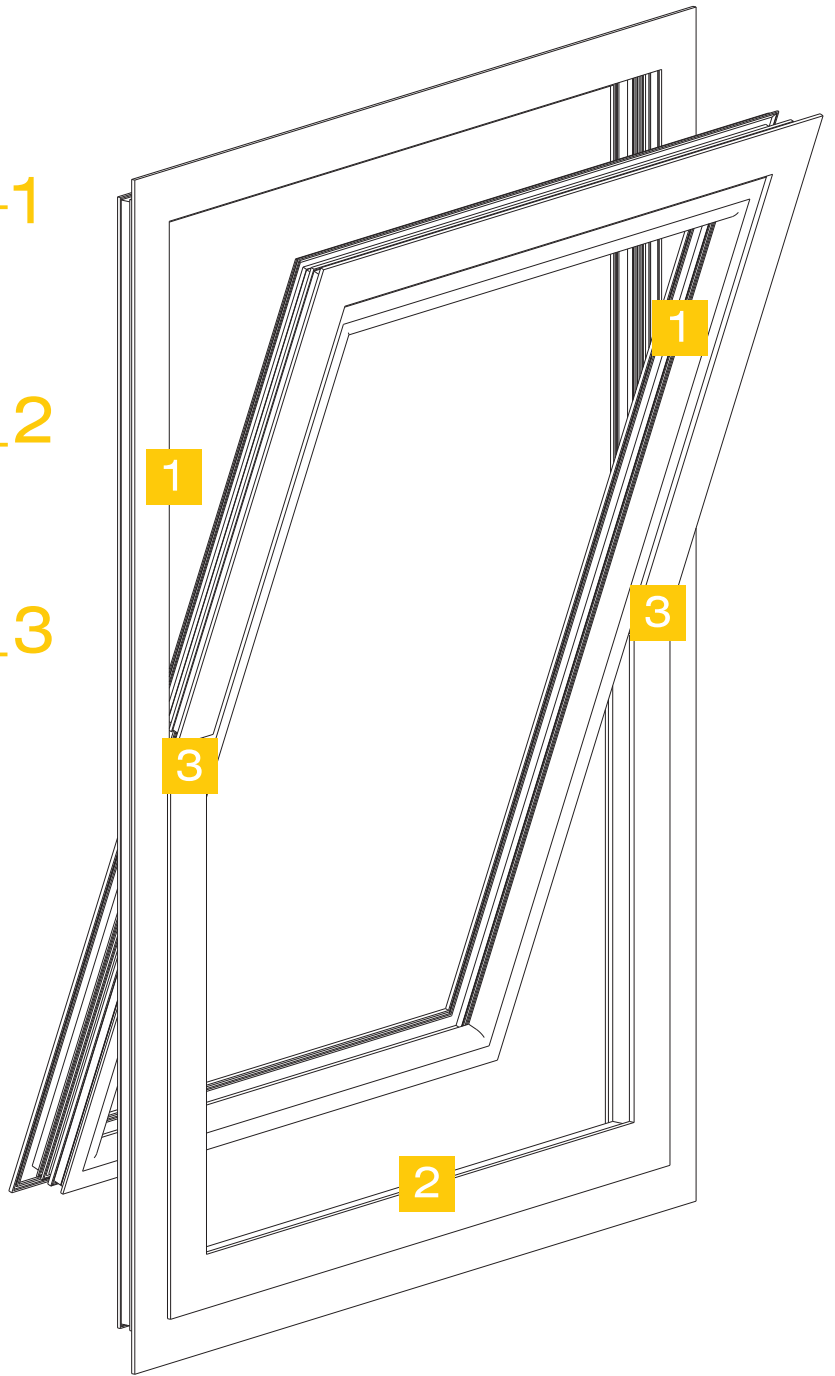
Arm stay 1
1341

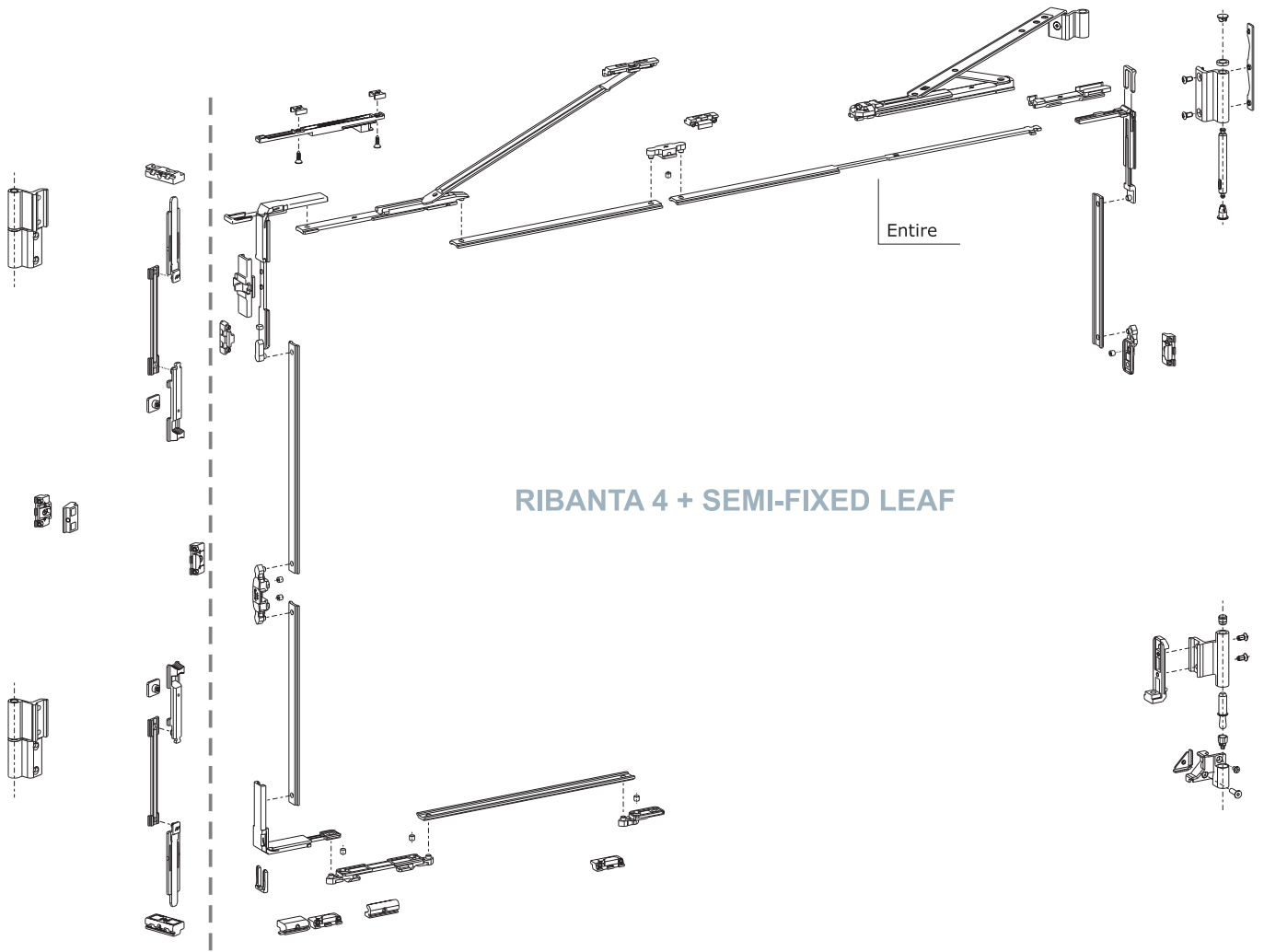


Folding opener 2
1206.1/1 - 1206.1/2

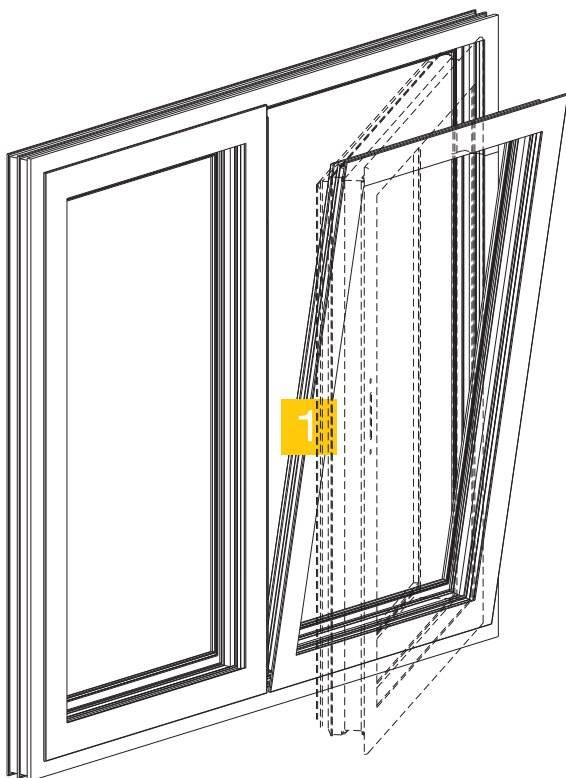


Pivot hinge 3
1151.4 - 1151.XX





RIBANTA 4 + SEMI-FIXED LEAF



Handle
873.1 - 873.2

1

For article codes and components,
please see SAVIO general documentation



Door handle 1
874.30/.31/.32 - 884



Escutcheon
874.801/.804



Hinge 2
1121 - 1122.200



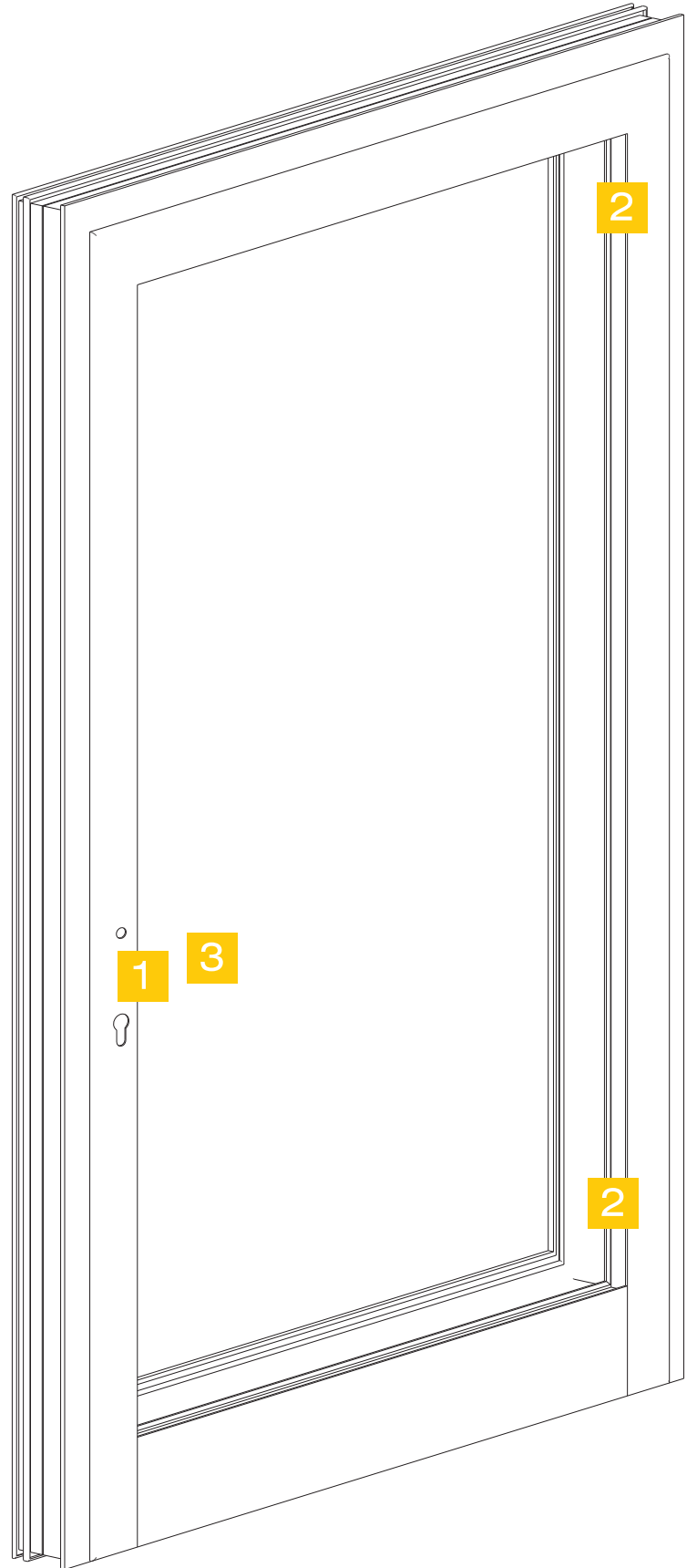
Hinge 2
1124.30



Mortise lock 3
1852.19



Cylinder
1852.801

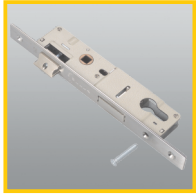




Door handle 1
874.30/.31/.32 - 884



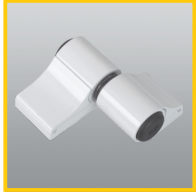
Escutcheon 1
874.801/.804



Mortise lock 2
1852.19



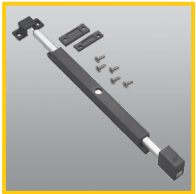
Cylinder 1
1852.801



Hinge 3
1145/60 - 1145.3/60



Fastening Kit 1
1145.704/.714



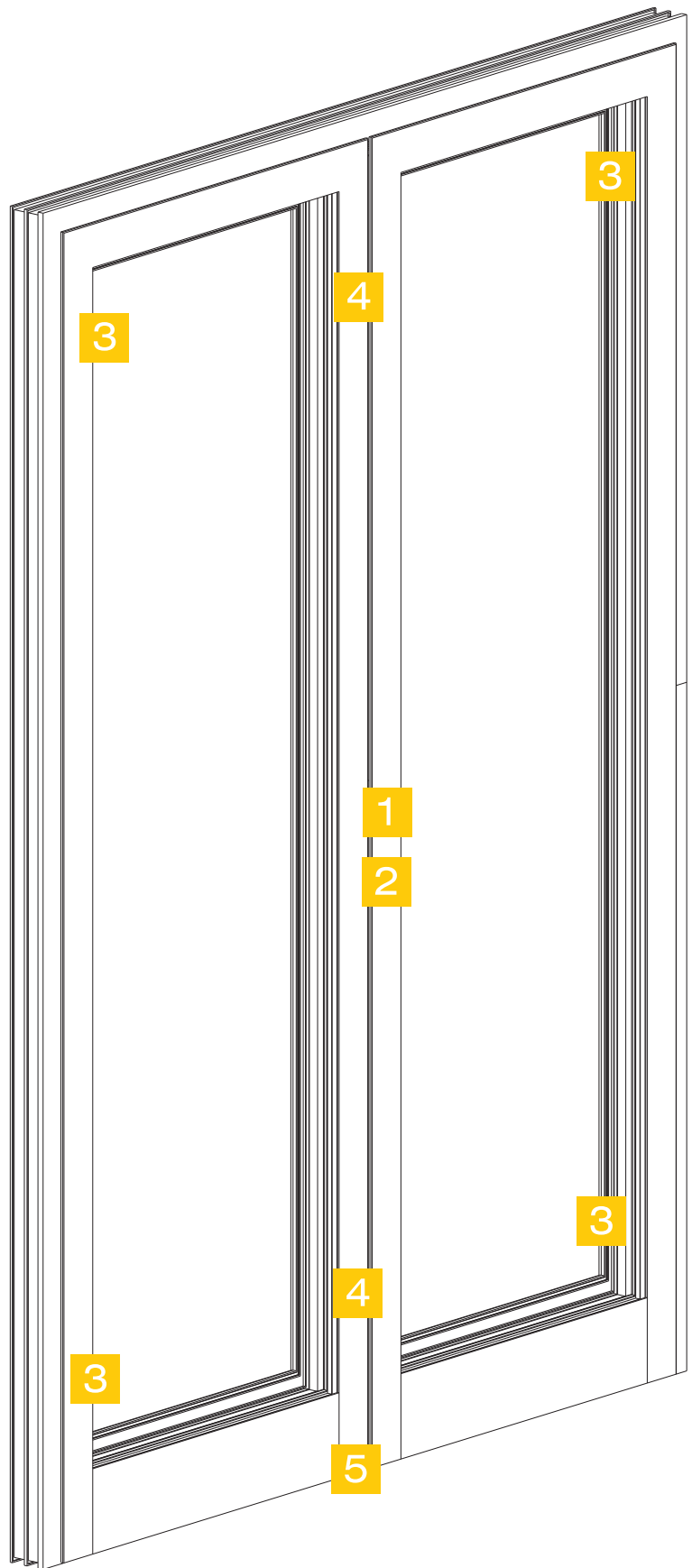
Clamp bolt 4
1570/50 - 1572/50



Floor Keeper 5
1408



Powder-resistant floor Keeper 1
1409





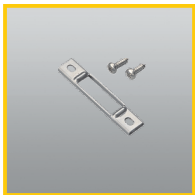
Lateral closing gear 1
2060.1



Automatic closing gear 1
2047 - 2048



Locking piece 2
2050.XXX



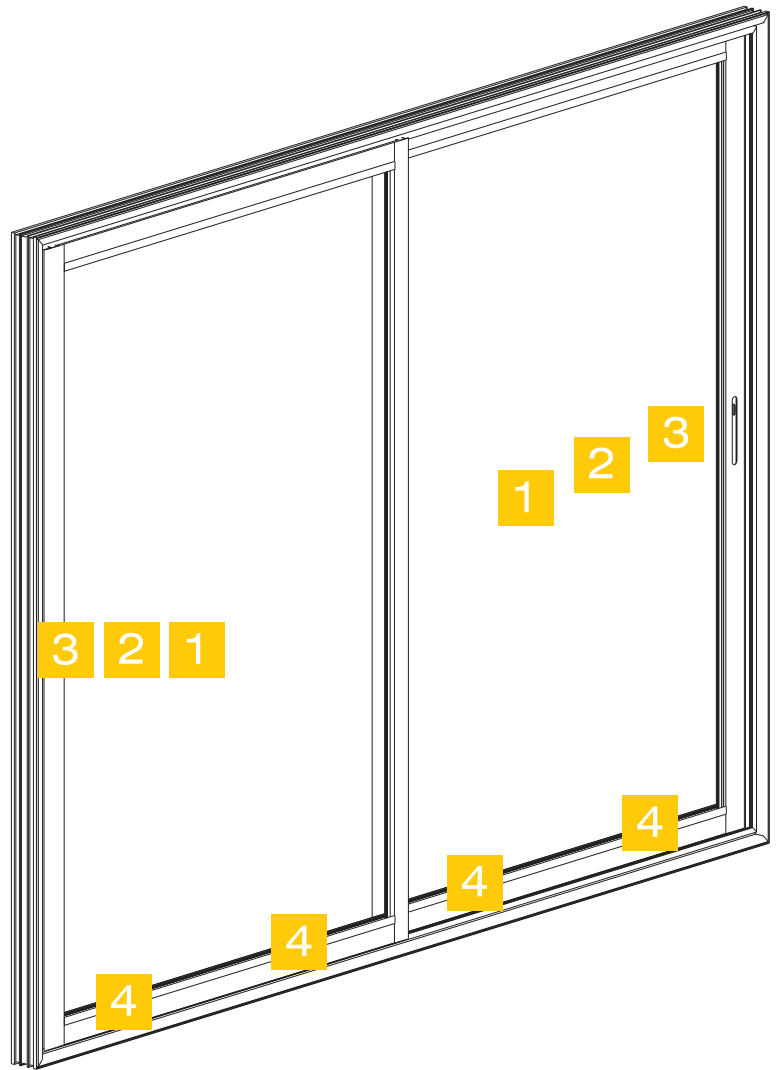
Keeper 3
2070.860

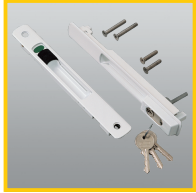


Closing Kit
2060.802

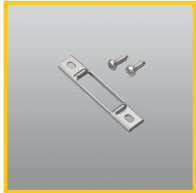


Fixed roller 4
2105 - 2110





Lateral closing gear 1
2070.1 - 2073.1



Keeper 2
2070.860



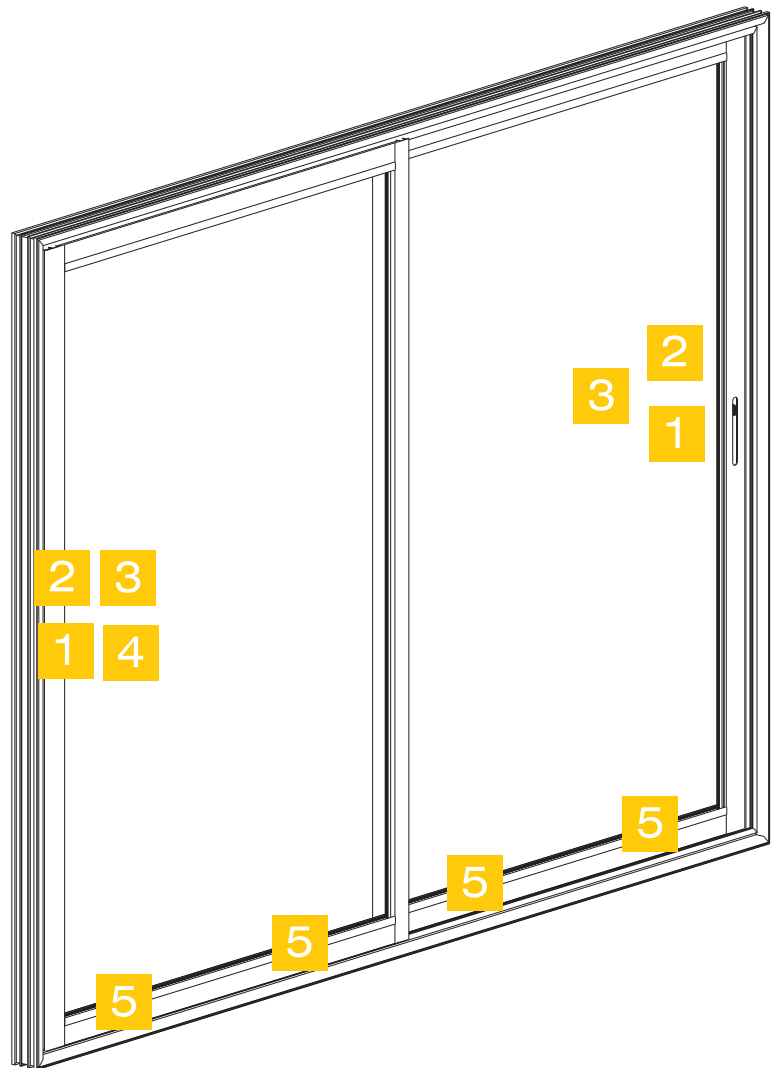
Locking piece 3
2070.835 or 2070.XXX

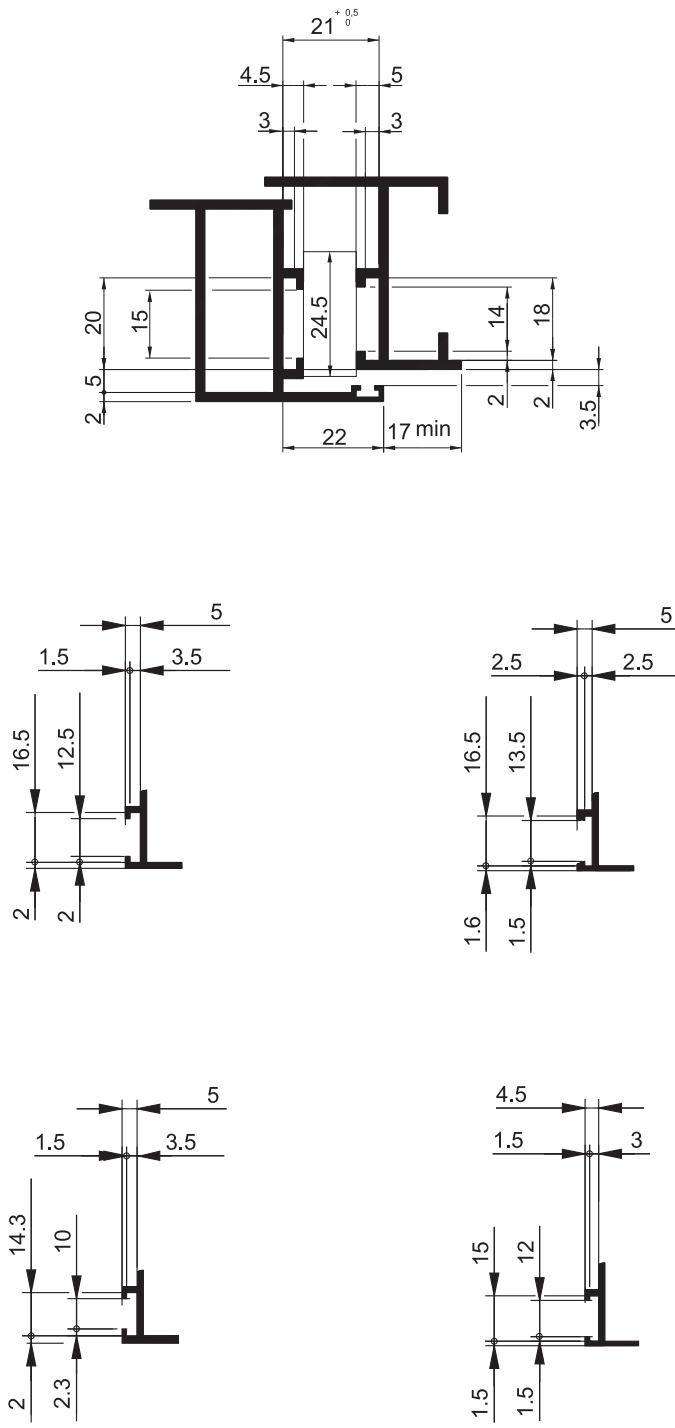


Pull handle 4
2080 - 2080.1



Fixed roller 5
2105 - 2110







Quality and innovation for closing system